

OmniMetalcraft Corp.

DISTRIBUTOR DIVISION



Quick C o n v e y o r s SHIP

QUICK SHIP POLICY

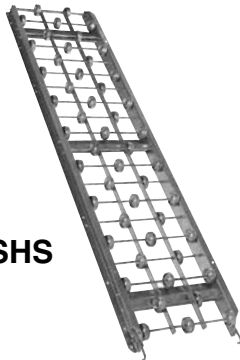
- Orders placed before 2:00 P.M. EST will be shipped the following business day.
- Orders placed after 2:00 P.M. EST will be shipped the second following business day.
- Quantity available for shipment is contingent upon quantity in stock at time of order.
- Shipment routing to be determined by Omni Metalcraft Corp.
- All weights listed in this section DO NOT include crating.
- All orders subject to Omni Metalcraft Corp.'s Standard Terms and Conditions of Sale.

P.O. Box 352 ■ Alpena, Michigan 49707
Phone 989.358.7000
Fax 989.358.7020
dist@omni.com
www.omni.com

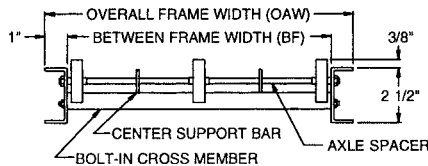


Gravity Skatewheel Conveyor

Gravity Skatewheel Conveyors are uniquely designed to convey lightweight packages or for use in operations requiring lightweight movable sections. Differential action of the wheels insures proper orientation of packages.



Model WSHS



- 5 Widths
- Steel or Aluminum Frames
- 5 ft. and 10 ft. Sections
- Axles on 3 in. Centers

LOAD CAPACITY CHART			
Frame Material	Support Centers	Frame Capacity	Wheel Capacity
		Max. Uniformly Dist. Load	Max. Static Load Per Wheel
Steel	5' 0"	1300 lbs.	65 lbs.
	10' 0"	350 lbs.	
Aluminum	5' 0"	710 lbs.	50 lbs.
	10' 0"	160 lbs.	

Standard Specifications:

Frame - 2 1/2 in. deep x 1 in. flange x 12 ga. galvanized steel or 1/8 in. aluminum channel with bolt-in cross members spaced on 2 ft. centers.

Widths - 12 in., 15 in., 18 in., 24 in. and 30 in. overall.

Couplings - Hooks on one end, rod on opposite end. All couplings are bolted to frame.

Lengths - 5 ft. and 10 ft. straight sections.

Wheels - 1 15/16 in. dia. corrosion resistant aluminum or zinc coated steel wheels with lifetime lubrication.

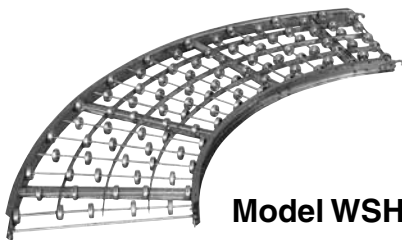
Axles - 1/4 in. dia. threaded one end with locknut. Spaced on 3 in. centers. Spacers are zinc coated steel.

SKATEWHEEL CONVEYOR									
Steel Frames					Aluminum Frames				
Overall Width	Model No.	WPF	Weight (lbs.)		Overall Width	Model No.	WPF	Weight (lbs.)	
			5' 0"	10' 0"				5' 0"	10' 0"
12"	WSHS3-12-10	10	37	72	12"	WAHS3-12-10	10	20	38
15"	WSHS3-15-10	10	40	77	15"	WAHS3-15-10	10	22	42
18"	WSHS3-18-16	16	47	92	18"	WAHS3-18-16	16	27	53
24"	WSHS3-24-20	20	58	133	24"	WAHS3-24-20	20	34	66
30"	WSHS3-30-24	24	69	134	30"	WAHS3-30-24	24	41	80

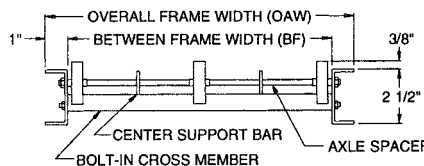


Gravity Skatewheel Curve Conveyor

Gravity Skatewheel Curve Conveyors are compatible with straight sections, providing flexibility to your conveyor line. Differential action of the wheels insures proper orientation of packages.



Model WSHC



- 5 Widths
- Steel or Aluminum Frames
- 45° and 90° Curves
- Hooks and Rods on Ends

Standard Specifications:

Frame - 2 1/2 in. deep x 1 in. flange x 12 ga. galvanized steel or 1/8 in. aluminum channel with bolt-in cross members.

Widths - 12 in., 15 in., 18 in., 24 in. or 30 in. overall.

Curves - 45° and 90° with 48 in. outside radius for 12 in., 15 in., and 18 in. widths and 60 in. outside radius for 24 in. and 30 in. widths.

Couplings - Hooks and rods on both ends of curve.

Wheels - 1 15/16 in. dia. corrosion resistant aluminum or zinc coated steel wheels with lifetime lubrication.

SKATEWHEEL CURVE CONVEYOR									
Steel Frames					Aluminum Frames				
Overall Width	Model No.	WPF	Weight (lbs.)		Overall Width	Model No.	WPF	Weight (lbs.)	
			45°	90°				90°	
12"	WSHC3-12-10	10	20	41	12"	WAHC3-12-10	10	22	
15"	WSHC3-15-10	10	22	43	15"	WAHC3-15-10	10	23	
18"	WSHC3-18-16	16	25	51	18"	WAHC3-18-16	16	29	
24"	WSHC3-24-20	20	41	78	24"	WAHC3-24-20	20	49	
30"	WSHC3-30-24	24	48	91	30"	WAHC3-30-24	24	54	

Axles - 1/4 in. dia. threaded one end with locknut. Spaced on 3 in. equivalent centers. Spacers are zinc coated steel.

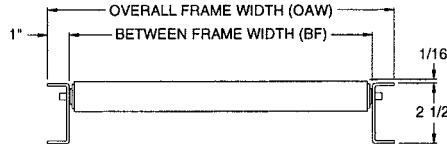
Capacity - Same "Per Foot" capacity as straight sections.

Gravity Roller Conveyor 1 3/8 in. dia. x 18 ga. Rollers



Model RSHS

1-3/8 in. dia. Gravity Roller Conveyors are ideal for carrying lightweight packages or for use in operations requiring lightweight movable sections. They are compatible with curves, providing flexibility to your conveyor line.



- 5 Widths
- Steel or Aluminum Frames
- 5 ft. and 10 ft. Sections
- 8 Roller Centers

Standard Specifications:

Frame - 2 1/2 in. deep x 1 in. flange x 12 ga. galvanized steel or 1/8 in. aluminum channel with bolt-in cross members spaced on 2 ft. centers.

Widths - 12 in., 15 in., 18 in., 24 in. and 30 in. overall.

Couplings - Hooks on one end, rod on opposite end. All couplings are bolted to frame.

Lengths - 5 ft. and 10 ft. straight sections.

Rollers - 1 3/8 in. dia. x 18 ga. galvanized steel or heat-treated aluminum tubing. Oiled ball bearings both ends.

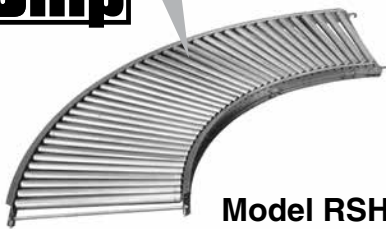
Axles - 1/4 in. dia. spring retained axle spaced on 1 1/2 in., 3 in., 4 in., 4 1/2 in., 6 in., 8 in., 9 in. and 12 in. centers.

LOAD CAPACITY CHART			
Frame Material	Support Centers	Roller Capacity	
		Max. Uniformly Dist. Load	Max. Load Per Roller
Steel	5' 0"	1300 lbs.	120 lbs.
	10' 0"	350 lbs.	
Aluminum	5' 0"	710 lbs.	
	10' 0"	160 lbs.	

1 3/8 in. ROLLER CONVEYOR									
Steel Frames					Aluminum Frames				
Overall Width	Model No.	Roller Centers	Weight (lbs.)		Overall Width	Model No.	Roller Centers	Weight (lbs.)	
			5' 0"	10' 0"				5' 0"	10' 0"
12"	RSHS1.4-12-1.5	1.5	54	107	12"	RAHS1.4-12-1.5	1.5	29	56
	RSHS1.4-12-3	3	38	74		RAHS1.4-12-3	3	19	37
	RSHS1.4-12-6	6	30	57		RAHS1.4-12-6	6	15	27
	RSHS1.4-12-12	12	25	49		RAHS1.4-12-12	12	12	22
15"	RSHS1.4-15-1.5	1.5	64	127	15"	RAHS1.4-15-1.5	1.5	33	66
	RSHS1.4-15-3	3	44	85		RAHS1.4-15-3	3	22	42
	RSHS1.4-15-6	6	34	64		RAHS1.4-15-6	6	16	31
	RSHS1.4-15-12	12	28	54		RAHS1.4-15-12	12	13	24
18"	RSHS1.4-18-1.5	1.5	74	146	18"	RAHS1.4-18-1.5	1.5	38	75
	RSHS1.4-18-3	3	49	96		RAHS1.4-18-3	3	25	47
	RSHS1.4-18-6	6	38	71		RAHS1.4-18-6	6	18	34
	RSHS1.4-18-12	12	30	58		RAHS1.4-18-12	12	14	27
24"	RSHS1.4-24-1.5	1.5	93	184	24"	RAHS1.4-24-1.5	1.5	47	93
	RSHS1.4-24-3	3	61	117		RAHS1.4-24-3	3	30	58
	RSHS1.4-24-6	6	45	85		RAHS1.4-24-6	6	22	41
	RSHS1.4-24-12	12	35	67		RAHS1.4-24-12	12	17	31
30"	RSHS1.4-30-1.5	1.5	113	223	30"	RAHS1.4-30-1.5	1.5	57	112
	RSHS1.4-30-3	3	72	139		RAHS1.4-30-3	3	36	68
	RSHS1.4-30-6	6	53	98		RAHS1.4-30-6	6	26	47
	RSHS1.4-30-12	12	40	77		RAHS1.4-30-12	12	19	36

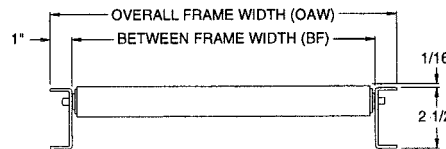
4 in., 4 1/2 in., 8 in. and 9 in. spacing also available.

Gravity Roller Curve Conveyor 1 3/8 in. dia. x 18 ga. Rollers



Model RSHC

1-3/8 in. dia. Gravity Roller Curve Conveyors are compatible with straight sections, providing flexibility to your conveyor line. They are ideal for carrying lightweight packages.



- 5 Widths
- Steel or Aluminum Frames
- 45° and 90° Curves
- Hooks and Rods on Ends

Standard Specifications:

Frame - 2 1/2 in. deep x 1 in. flange x 12 ga. galvanized steel or 1/8 in. aluminum channel with bolt-in cross members.

Widths - 12 in., 15 in., 18 in., 24 in. and 30 in. overall.

Curves - 45° and 90° with 48 in. outside radius for 12 in., 15 in. and 18 in. widths and 60 in. outside radius for 24 in. and 30 in. widths.

Couplings - Hooks and rods on both ends of curve.

Rollers - 1 3/8 in. dia. x 18 ga. galvanized steel or heat-treated aluminum tubing. Oiled ball bearings both ends.

Axles - 1/4 in. dia. spring retained axle spaced on 3 in. equivalent centers. 1 1/2 in. equivalent roller centers available on 12 in. and 24 in. widths.

Capacity - Same "Per Foot" capacity as straight sections.

1 3/8 in. ROLLER CURVE CONVEYOR									
Steel Frames					Aluminum Frames				
Overall Width	Model No.	Roller Centers	Weight (lbs.)		Overall Width	Model No.	Roller Centers	Weight (lbs.)	
			45°	90°				90°	
12"	RSHC1.4-12-1.5	1.5	29	58	12"	RAHC1.4-12-1.5	1.5	31	
	RSHC1.4-12-3	3	22	42		RAHC1.4-12-3	3	21	
15"	RSHC1.4-15-3	3	24	47	15"	RAHC1.4-15-3	3	24	
18"	RSHC1.4-18-3	3	27	49	18"	RAHC1.4-18-3	3	27	
24"	RSHC1.4-24-1.5	1.5	51	102	24"	RAHC1.4-24-1.5	1.5	52	
	RSHC1.4-24-3	3	35	69		RAHC1.4-24-3	3	34	
30"	RSHC1.4-30-3	3	41	76	30"	RAHC1.4-30-3	3	40	



Gravity Roller Conveyor

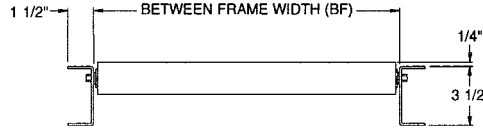
1.9 in. dia. x 16 ga. Rollers

1.9 in. dia. Gravity Roller Conveyors, used in permanent installations, provide an economical means of carrying light to medium weight packages. Compatible with curves, they provide flexibility to your conveyor line.

Model
GPHS1.9x16



- 6 Between Frame Widths
- Galvanized Steel Frames
- 5 ft. and 10 ft. Sections
- 8 Roller Centers



LOAD CAPACITY CHART		
Support Centers	Frame Capacity	Roller Capacity
	Max. Uniformly Dist. Load	Max. Load Per Roller
5' 0"	3300 lbs.	260 lbs.
10' 0"	1200 lbs.	

Standard Specifications:

Frame - 3 1/2 in. deep x 1 1/2 in. flange x 10 ga. galvanized steel channel with bolt-in cross members.

Between Frame Widths - 14 in., 18 in., 22 in., 26 in., 32 in. and 38 in. between frames.

End Couplers - Bolt-on type for bolting sections together.

Lengths - 5 ft. and 10 ft. straight sections.

Rollers - 1.9 in. dia. x 16 ga. galvanized steel tubing. Grease packed ball bearings both ends.

Axles - 7/16 in. spring retained hex axle spaced on 2 in., 3 in., 4 in., 4 1/2 in., 6 in., 8 in., 9 in. and 12 in. centers.

1.9 in. ROLLER CONVEYOR									
1.9 in. dia. x 16 ga. Rollers					1.9 in. dia. x 16 ga. Rollers				
Between Frame Width	Model No.	Roller Centers	Weight (lbs.)		Between Frame Width	Model No.	Roller Centers	Weight (lbs.)	
			5' 0"	10' 0"				5' 0"	10' 0"
14"	GPHS1.9x16-14-2	2	109	217	26"	GPHS1.9x16-26-2	2	166	331
	GPHS1.9x16-14-3	3	84	167		GPHS1.9x16-26-3	3	123	245
	GPHS1.9x16-14-4.5	4.5	67	134		GPHS1.9x16-26-4.5	4.5	93	189
	GPHS1.9x16-14-6	6	59	117		GPHS1.9x16-26-6	6	80	159
18"	GPHS1.9x16-18-2	2	128	255	32"	GPHS1.9x16-32-2	2	194	388
	GPHS1.9x16-18-3	3	97	193		GPHS1.9x16-32-3	3	142	284
	GPHS1.9x16-18-4.5	4.5	75	153		GPHS1.9x16-32-4.5	4.5	106	216
	GPHS1.9x16-18-6	6	66	131		GPHS1.9x16-32-6	6	90	180
22"	GPHS1.9x16-22-2	2	147	293	38"	GPHS1.9x16-38-2	2	-	-
	GPHS1.9x16-22-3	3	110	219		GPHS1.9x16-38-3	3	-	-
	GPHS1.9x16-22-4.5	4.5	84	171		GPHS1.9x16-38-4.5	4.5	-	-
	GPHS1.9x16-22-6	6	73	145		GPHS1.9x16-38-6	6	-	-

4 in., 8 in., 9 in. and 12 in. spacing also available.



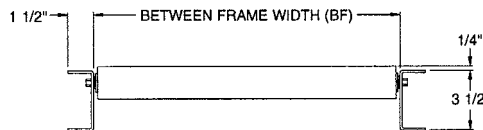
Gravity Roller Curve Conveyor

1.9 in. dia. x 16 ga. Rollers

1.9 in. dia. Gravity Roller Curve Conveyors are for use in permanent installations to carry medium weight packages. They are compatible with straight sections, providing flexibility to your conveyor line.



Model
GPHC1.9x16



- 2 Between Frame Widths
- Galvanized Steel Frames
- 45° and 90° Curves

1.9 in. ROLLER CURVE CONVEYOR				
1.9 in. dia. x 16 ga. Rollers				
Between Frame Width	Inside Radius	Rollers per 90° Curve	Model No.	Weight (lbs.)
				90°
18"	32 1/2"	22	GPHC1.9x16-18-3	111
22"	32 1/2"	22	GPHC1.9x16-22-3	127

Standard Specifications:

Frame - 3 1/2 in. deep x 1 1/2 in. flange x 10 ga. galvanized steel channel with bolt-in cross members.

Between Frame Widths - 18 in. and 22 in. between frames.

Curves - 45° and 90° with 32 1/2 in. inside radius for 18 in. and 22 in. widths.

End Couplers - Bolt-on type for bolting sections together.

Rollers - 1.9 in. dia. x 16 ga. galvanized steel tubing. Grease packed ball bearings both ends.

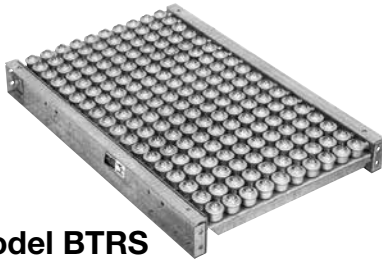
Axles - 7/16 in. spring retained hex axle spaced on 3 in. equivalent centers.

Capacity - Same "Per Foot" capacity as straight sections.



Ball Transfer Tables

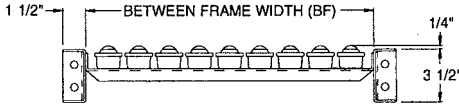
Ball Transfer Tables are used where products are required to manually rotate or move in any direction. They are compatible with 1.9 in. dia. Gravity Roller Conveyors, Line Shaft Conveyors and Belt Conveyors.



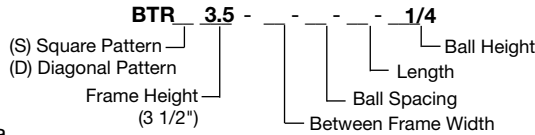
Model BTRS

Standard Specifications:

- Frame** - 3 1/2 in. deep x 1 1/2 in. flange x 10 ga. galvanized steel channel with bolt-in 10 ga. pans.
- Between Frame Widths** - 14 in., 18 in., 22 in., 26 in., 32 in. and 38 in. between frames.
- End Couplers** - Bolt-on type for bolting sections together.
- Lengths** - 2 ft. through 10 ft. in 12 in. increments.
- Balls** - 1 in. dia. ball transfers.
- Spacing** - Square centers of 2 in., 4 in. and 6 in. Nominal diagonal centers of 3 in. and 6 in.



- **6 Between Frame Widths**
- **5 Ball Centers**
- **Square or Diagonal Patterns**



LOAD CAPACITY CHART		
Support Centers	Frame Capacity	Ball Capacity*
	Max. Uniformly Dist. Load	Max. Load Per Ball
5' 0"	3300 lbs.	50 lbs.
10' 0"	1200 lbs.	

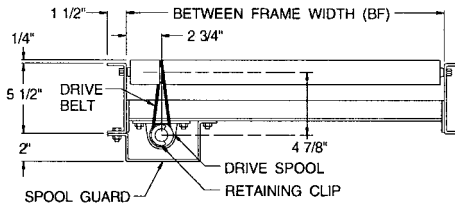
* Maximum product weight should not exceed 150 lbs. as product may only rest on 3 ball transfers at one time.

BALL TRANSFER TABLE					
Weight per foot (lbs.)					
Between Frame Width	2" Centers Square	3" Centers Diagonal	4" Center Square	6" Centers Square	6" Centers Diagonal
14"	29	23	21	--	--
18"	36	27	24	21	21
22"	43	31	27	23	23
26"	50	36	31	27	27
32"	60	43	36	31	31
38"	70	50	41	35	35

Lineshaft Conveyors are live roller conveyors capable of accumulating products with minimum back pressure. They are also quiet-running and require minimal maintenance.



Model LSDS



- 4 Between Frame Widths
- Minimum Pressure Accumulation
- Single Drive Powers Several Feet of Conveyor

Standard Specifications:

Frame - 5 1/2 in. deep x 12 ga. galvanized steel channel with bolt-in cross members and end caps.

Between Frame Widths - 14 in., 18 in., 22 in. and 32 in. between frames.

Lengths - 3 ft. and 10 ft. drive section; 5 ft., 7 ft. and 10 ft. slaved sections.

Rollers - 1.9 in. dia. x 16 ga. galvanized rollers with 7/16 in. spring retained hex axle. Grease packed ball bearings both ends. Spaced on 3 in. centers.

Floor Supports - Adjustable 36 in. to 48 in. top of rollers.

***Drive** - 1/2 HP - 230/460V - 3 Phase - 60 Hz. - TEFC with "C" face speed reducer mounted beneath 3 ft. drive section.

*Good for a maximum 40'-0" long conveyor.

LOAD CAPACITY CHART		
Support Centers	Frame Capacity	Roller Capacity
	Max. Uniformly Dist. Load	Max. Load Per Roller
5' 0"	5500 lbs.	15 lbs.
10' 0"	2400 lbs.	

1.9 in. LINESHAFT CONVEYOR						
1.9 in. dia. x 16 ga. Rollers						
Between Frame Width	3 ft. Drive Section	10 ft. Drive Section	Model No.*	Weight (lbs.)		
				5' 0"	7' 0"	10' 0"
14"	137	292	LSSS1.9x16-14-3	119	162	229
18"	147	320	LSSS1.9x16-18-3	132	180	254
22"	157	348	LSSS1.9x16-22-3	146	198	280
32"	183	418	LSSS1.9x16-32-3	180	244	345

* Model No. above reflects slaved sections only. To specify the 3 ft. drive section use Model No. LSDS1.9 x 16 - BF - 3 - 3.

Drive Shaft - 1 in. dia. steel with Delrin spools, spacer clips and 3/16 in. dia. urethane drive belts as required.

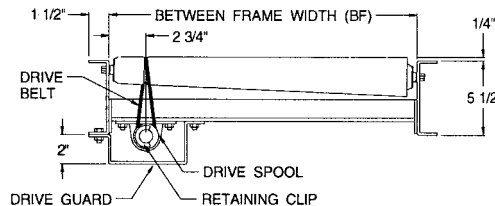
Spool Guard - Encloses underside of drive shaft, spools and drive belts for full length of conveyor.

Conveying Speed - Constant 60 FPM.

Lineshaft Curves are slave driven from lineshaft straight sections and allow for turns in the conveyor line. They are also quiet-running and require minimal maintenance.



Model LSSC



- 2 Between Frame Widths
- 45° and 90° Curves
- Slave Driven From Straights

Standard Specifications:

Frame - 5 1/2 in. deep x 12 ga. galvanized steel channel with bolt-in cross members and end caps. Outside rail has "triple-punched" hex holes to allow skewing of rollers to affect product tracking.

Between Frame Widths - 14 in., 18 in., 22 in. and 32 in. between frames.

Curves - 45° and 90° curves have a 36 in. inside radius.

Rollers - 2 1/2 in. dia. tapered to 1 11/16 in. x 14 ga. zinc plated rollers. Grease packed ball bearings. Spaced on 3 in. centers along the centerline.

Floor Supports - Adjustable 36 in. to 48 in. top of roller.

Slave Driven - Curves are slaved from drive shaft of straight section. Shafts coupled by Delrin chain coupling at bed joints.

1.9 in. LINESHAFT CURVE CONVEYOR					
2 1/2 in. dia. to 1 11/16 in. dia. x 14 ga. Tapered Rollers					
Between Frame Width	Model No.	Weight (lbs.)	Between Frame Width	Model No.	Weight (lbs.)
		90°			90°
14"	LSSC1.9X16-14-3	199	22"	LSSC1.9X16-22-3	236
18"	LSSC1.9X16-18-3	218	32"	LSSC1.9X16-32-3	282

Drive Shaft - 1 in. dia. steel with Delrin spools, clips, 3/16 in. urethane drive belts and universal joints as required.

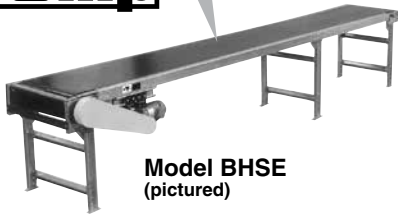
Spool Guard - Encloses underside of drive shaft, spools and drive belts.

Capacity - Same "Per Foot" capacity as straight sections.



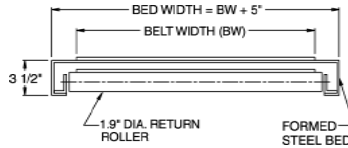
Slider Bed Belt Conveyor

Slider Bed Belt Conveyors provide a versatile means of handling products of various sizes and shapes. Applications include assembly lines, sorting, inspection or simply transportation.



Model BHSE
(pictured)

Model BHSC - Center Drive
(not pictured)



- 5 ft. and 10 ft. Intermediate Sections
- Bolt-Together Construction
- Supported at Every Bed Joint

Standard Specifications:

Belt - Trackmate 120 with clipper lacing.

Bed - 3 1/2 in. deep x 12 ga. galvanized steel slider bed. Standard 5 ft. and 10 ft. long bolt-together sections with bolt-on end couplers.

Floor Supports - Adjustable 33 7/8 in. to 38 1/8 in. top of belt.

Drive - 1/2 HP to 2 HP - 230/460V - 3 Phase - 60 Hz. - TEFC with sealed worm gear "C" face speed reducer as required.

Drive Pulley - 4 in. dia. with 1 3/16 in. dia. shaft or 8 in. dia. with 1 7/16 in. dia. shaft, crowned and fully lagged.

Tail Pulley - 4 in. dia. with 1 3/16 in. dia. shaft, crowned.

Take-Up - Provides belt take-up at tail pulley to allow for future belt stretch.

Conveying Speed - Constant 60 FPM.

NOTE: A short belt segment laced on both ends, commonly called a "dutchman", is provided with end driven conveyors over 47 ft. OAL.

SLIDER BED BELT CONVEYOR									
Overall Length	Weight (lbs.)								
	BW	12"	16"	18"	20"	24"	30"	8" Dia. Drive Pulley 6" Dia. Tail Pulley	36"
7' 0"		325	369	386	403	434	-	-	-
12' 0"		403	458	482	-	547	615	-	800
17' 0"	4" Dia. Drive Pulley	481	547	577	-	660	746	-	974
22' 0"		559	636	672	-	773	877	-	1148
27' 0"		636	725	768	-	886	1008	-	1322

* 10 ga. galvanized slider bed

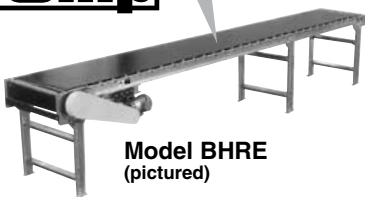
LOAD CAPACITY CHART			
HP	Belt Width		
	12" - 18"	20" - 24"	30" - 36"
1/2	250 lbs.	160 lbs.	**
3/4	500 lbs.	390 lbs.	180 lbs.
1	740 lbs.	640 lbs.	420 lbs.
1 1/2	1230 lbs.*	1090 lbs.*	910 lbs.
2	1680 lbs.*	1580 lbs.*	**

* 8 in. dia. drive pulley in lieu of 4 in. dia. drive pulley



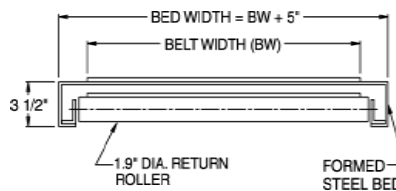
Roller Bed Belt Conveyor

Roller Bed Belt Conveyors provide a versatile means of handling products of various sizes and shapes. Roller bed design provides for increased capacity with lower power requirements.



Model BHRE
(pictured)

Model BHRC - Center Drive
(not pictured)



- 5 ft. and 10 ft. Intermediate Sections
- Bolt-Together Construction
- Supported at Every Bed Joint

Standard Specifications:

Belt - Trackmate 120 with clipper lacing.

Bed - Roller bed with 1.9 in. dia. x 16 ga. rollers spaced every 3 or 6 inches. Mounted in 5 1/2 in. deep x 12 ga. galvanized steel channel frames. Standard 5 ft. and 10 ft. long bolt-together sections with bolt-on end couplers.

Floor Supports - Adjustable 32 1/8 in. to 38 1/8 in. top of belt.

Drive - 1/3 HP to 2 HP - 230/460V - 3 Phase - 60 Hz. - TEFC with sealed worm gear "C" face speed reducer as required.

Drive Pulley - 4 in. dia. with 1 3/16 in. dia. shaft or 8 in. dia. with 1 7/16 in. dia. shaft, crowned and fully lagged.

Tail Pulley - 4 in. dia. with 1 3/16 in. dia. shaft, crowned.

Take-Up - Provides belt take-up at tail pulley to allow for future belt stretch.

Conveying Speed - Constant 60 FPM.

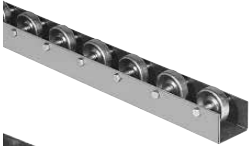
NOTE: A short belt segment laced on both ends, commonly called a "dutchman", is provided with end driven conveyors over 47 ft. OAL.

ROLLER BED BELT CONVEYOR									
Overall Length	Weight (lbs.)								
	BW	12"	16"	18"	20"	24"	30"	8" Dia. Drive Pulley 6" Dia. Tail Pulley	36"
7' 0"		389	418	435	452	482	**	**	801
12' 0"		475	515	538	**	602	669	-	**
17' 0"	4" Dia. Drive Pulley	561	612	641	**	722	807	-	955
22' 0"		647	709	745	**	842	944	-	1109
27' 0"		734	806	848	**	962	1082	-	1263

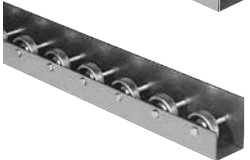
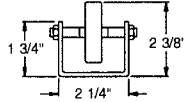
LOAD CAPACITY CHART			
HP	Belt Width		
	12" - 18"	20" - 24"	30" - 36"
1/3	1300 lbs.	1100 lbs.	700 lbs.
1/2	2300 lbs.	2100 lbs.	1700 lbs.
3/4	3800 lbs.	3600 lbs.	3200 lbs.
1	5200 lbs.	5000 lbs.	4600 lbs.
1 1/2	8200 lbs.	7950 lbs.	7550 lbs.
2	11000 lbs.*	10800 lbs.*	**

* 8 in. dia. drive pulley in lieu of 4 in. dia. drive pulley

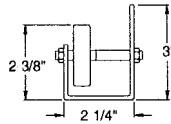
Flow Rails are ideal for conveying lightweight packages when two or more sections are placed side by side. They are often used in gravity storage racks and can be used to guide packages.



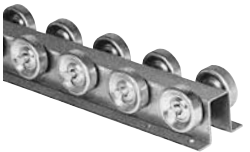
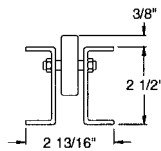
Style #1



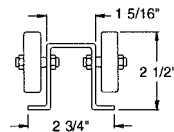
Style #2



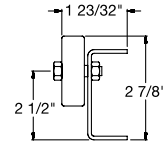
Style #3



Style #4



Style #5



- 1 15/16 in. dia. Wheels
- Bolt-Together Construction
- Available in 10 ft. Lengths
- Style #4 Available With Wheels Staggered

FLOWRAIL (Light Duty)					
Model Number	Wheel Description	Style	Spacing	Length	Weight (lbs.)
FRWL1.94-1-3-10	In Line	1	3"	10' 0"	30
FRWL1.94-2-3-10	In Line	2	3"	10' 0"	34
FRWL1.94-3-3-10	In Line	3	3"	10' 0"	39
FRWS1.94-4-3-10	Staggered	4	3"	10' 0"	26
FRWP1.94-4-3-10	Paired	4	3"	10' 0"	37
FRWP1.94-5-3-10	In Line	5	3"	10' 0"	24

Standard Specifications:

Frame - Style #1, #2, #3 and #5 frames are constructed of 12 ga. galvanized formed steel. Style #4 is constructed of 14 ga. galvanized formed steel channel.

Wheels - 1 15/16 in. dia. wheels spaced on 3 in. centers.

Leg Supports are designed for the temporary or permanent support of conveyor sections. They are available in several sizes and styles to accommodate various conveyor types and loads.



Model TSTD

TRIPOD LEG SUPPORT

- T-Widths available in sizes 9 3/4 in., 15 3/4 in. and 21 3/4 in. for all top of leg heights. Painted Omni Blue.
- For Skatewheel Conveyor and 1 3/8 in. dia. Gravity Roller Conveyor.

TRIPOD LEG SUPPORTS	
Model Number	Top of Leg Adjustments
TSTD "T-Width"-11-17	11" - 17"
TSTD "T-Width"-17-29	17" - 29"
TSTD "T-Width"-23-39	23" - 39"
TSTD "T-Width"-29-51	29" - 51"
TSTD "T-Width"-39-71	39" - 71"



Model LHST

LIGHT DUTY "H" TYPE LEG SUPPORT (Bolt-Together Construction)

- Light duty bolt-together leg supports are constructed of 3 in. formed channel (Galvanized).
- For Skatewheel Conveyor and 1 3/8 in. dia. Gravity Roller Conveyor.

"H" TYPE LEG SUPPORT (Light Duty)	
Model Number	Top of Leg Adjustments
LHST "BF"-12.25-16.25	12.25" - 16.25"
LHST "BF"-14.25-20.25	14.25" - 20.25"
LHST "BF"-18.25-24.25	18.25" - 24.25"
LHST "BF"-22.25-28.25	22.25" - 28.25"
LHST "BF"-26.25-32.25	26.25" - 32.25"
LHST "BF"-30.25-42.25	30.25" - 42.25"
LHST "BF"-38.25-50.25	38.25" - 50.25"



Model MHST

MEDIUM DUTY "H" TYPE LEG SUPPORT (Bolt-Together Construction)

- Medium duty bolt-together leg supports are constructed of 3 in. formed channel (Galvanized).
- For 1.9 in. dia. Gravity Roller Conveyor, Line Shaft Conveyor, Belt Conveyor and Belt Driven Live Roller Conveyor.

"H" TYPE LEG SUPPORT (Med. Duty)	
Model Number	Top of Leg Adjustments
MHST "BF"-12.25-16.25	12.25" - 16.25"
MHST "BF"-14.25-20.25	14.25" - 20.25"
MHST "BF"-18.25-24.25	18.25" - 24.25"
MHST "BF"-22.25-28.25	22.25" - 28.25"
MHST "BF"-26.25-32.25	26.25" - 32.25"
MHST "BF"-30.25-42.25	30.25" - 42.25"
MHST "BF"-38.25-50.25	38.25" - 50.25"

Quick Ship
Rollers Available

- *Most of our products
are available in stainless
steel construction*



Additional Offerings

- Training
- Roller Spec'ing
- Private Labeling
- Online Quoting Tool
- Custom Fabrication

OmniMetalcraftcorp.

P.O. Box 352
Alpena, Michigan 49707
Phone 989.358.7000
Fax 989.358.7020
dist@omni.com
www.omni.com