

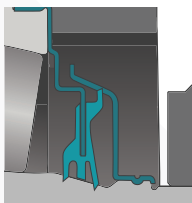
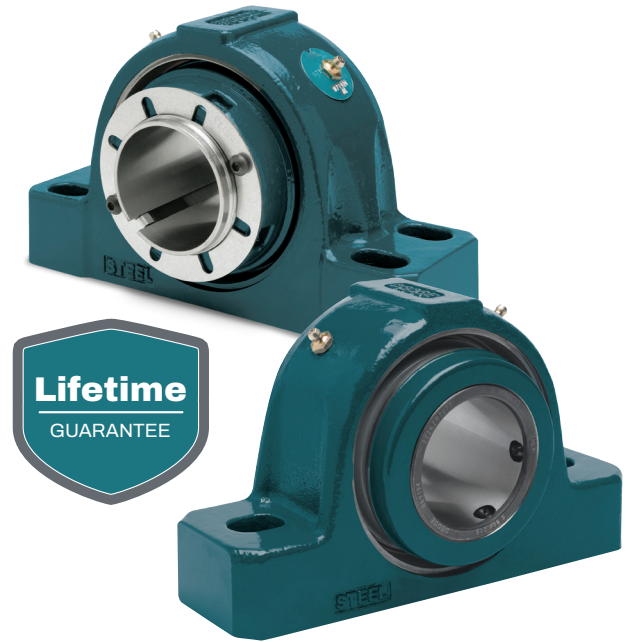
# Steel Offering

## Heavy-duty (HD) solutions for extreme applications

S-2000 and Imperial HD mounted spherical roller bearings combine the Dodge® legacy of proven performance with steel housings designed specifically for the most demanding applications with high-impact loads—from lumber to steel processing.

Offered in S-2000 with set screw mounting or Imperial with our patented push-pull adapter mounting system, the steel-housed bearings ship shaft-ready with heavy-duty features out of the box. The high-capacity, double-row spherical rolling elements are protected by an exclusive Trident™ triple-lip sealing system for maximum protection against contamination. The rugged cast-steel housing provides superior durability and maximum tensile strength over standard ductile iron—optimizing performance in the harshest applications.

Both bearings are proudly manufactured in the USA at our ISO 9001:2015-certified facility in Marion, NC to provide you with unrivaled lead times and industry-leading reliability.



Mechanically-retained Trident triple-lip sealing system prevents seal blowout and allows for efficient purging

Available with labyrinth non-contact seal for high-speed or high-temperature applications

Field convertible between expansion and non-expansion

Type E-dimensioned housing options available, featuring elongated bolt holes to facilitate easy interchanges

OPTIFY™-compatible for remote condition monitoring and automatic lubrication

Tapered seal landing maintains full seal contact, even when misaligned

Factory-assembled and prelubricated to be shaft-ready out of the box

High-quality steel housing offers maximum tensile strength for durability in the harshest applications

Precision-machined base provides industry-leading flatness, minimizing deflection under load



## Product offering

	Imperial		S-2000	
	IP-HD	IP-HD-E	S2-HD	S2-HD-E
Dimensional standard	Inch	E-dimensioned	Inch	E-dimensioned
2-bolt pillow block	1-1/8 in—4 in	1-3/8 in—3-1/2 in	1-3/8 in—3-1/2 in	1-3/8 in—3-15/16 in
4-bolt pillow block	2-3/8 in—5 in	2-1/4 in—5 in	2-1/4 in—5 in	2-7/16 in—4-15/16 in
4-bolt square flange	1-1/8 in—4 in	1-3/8 in—4-1/2 in	1-3/8 in—4-1/2 in	1-3/8 in—3-15/16 in
Piloted flange	1-1/8 in—5 in	—	—	—
Narrow piloted flange	1-7/16 in—4-1/2 in	—	—	—
Insert	1-1/8 in—5 in	1-1/8 in—5 in	1-1/8 in—5 in	1-3/8 in—4-15/16 in

**NOTE:** For metric options or sizes not listed, consult Application Engineering at [engineering@support.dodgeindustrial.com](mailto:engineering@support.dodgeindustrial.com) or +1 864 284 5700.

\*Bore sizes 3-11/16 inch—5 inch feature the patented Safety Mount® lock nut design.

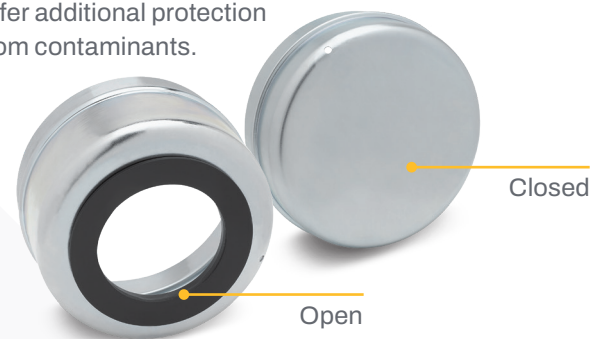


### Designed for durability. Built for a lifetime.

We stand behind our claims. All Imperial and S-2000 steel-housed bearings feature a lifetime guarantee against breakage in the cast-steel housing.

### End covers

Optional snap-on end covers offer additional protection from contaminants.



## Remote condition monitoring

Pre-drilled and tapped housing allows for easy installation of Dodge sensors to remotely view bearing health with the OPTIFY condition monitoring platform—empowering anyone to operate safely, improve reliability, and reduce downtime.



Get started at  
[dodgeoptify.com](http://dodgeoptify.com)