

**TOSHIBA**  
Leading Innovation >>>

Motor Catalog >>>>  
ADDENDUM - July 2014



**Totally Enclosed**  
**EQP Global XP Explosion Proof**  
 > NEMA Premium® Efficiency



Effective Date: 6/10/2014

HP	Speed (RPM)	Volts	Frame	Weight (lbs.)	Model Number	FL Amps	Nominal FL EFF	Notes	Discount Symbol	List Price
1	1800	230/460	143T	75	0014XPEA41A-P	3.4/1.7	85.5	1	MTPXPP	\$840
1	1800	575	143T	75	0014XPEC41A-P	1.3	85.5	1	MTPXPP	\$840
1	1200	230/460	145T	75	0016XPEA41A-P	3.6/1.8	82.5	1	MTPXPP	\$903
1	1200	575	145T	75	0016XPEC41A-P	1.5	82.5	1	MTPXPP	\$903
1.5	3600	230/460	143T	77	Y152XPEA41A-P	4.0/2.0	84.0	1	MTPXPP	\$886
1.5	3600	575	143T	77	Y152XPEC41A-P	1.6	84.0	1	MTPXPP	\$886
1.5	1800	230/460	145T	74	Y154XPEA41A-P	4.8/2.4	86.5	1	MTPXPP	\$910
1.5	1800	575	145T	74	Y154XPEC41A-P	1.9	86.5	1	MTPXPP	\$910
1.5	1200	230/460	182T	82	Y156XPEA41A-P	5.0/2.5	87.5	1	MTPXPP	\$978
1.5	1200	575	182T	82	Y156XPEC41A-P	2.0	87.5	1	MTPXPP	\$978
2	3600	230/460	145T	77	0022XPEA41A-P	5.2/2.6	85.5	1	MTPXPP	\$917
2	3600	575	145T	77	0022XPEC41A-P	2.1	85.5	1	MTPXPP	\$917
2	1800	230/460	145T	77	0024XPEA41A-P	6.0/3.0	86.5	1	MTPXPP	\$916
2	1800	575	145T	77	0024XPEC41A-P	2.4	86.5	1	MTPXPP	\$916
2	1200	230/460	184T	114	0026XPEA41A-P	6.8/3.4	88.5	1	MTPXPP	\$1,130
2	1200	575	184T	114	0026XPEC41A-P	2.7	88.5	1	MTPXPP	\$1,130
3	3600	230/460	182T	120	0032XPEA41A-P	7.4/3.7	86.5	1	MTPXPP	\$1,057
3	3600	575	182T	120	0032XPEC41A-P	3.0	86.5	1	MTPXPP	\$1,057
3	1800	230/460	182T	118	0034XPEA41A-P	8.0/4.0	89.5	1	MTPXPP	\$1,152
3	1800	575	182T	118	0034XPEC41A-P	3.2	89.5	1	MTPXPP	\$1,152
3	1200	230/460	213T	198	0036XPEA41A-P	8.8/4.4	89.5	1	MTPXPP	\$1,429
3	1200	575	213T	198	0036XPEC41A-P	3.5	89.5	1	MTPXPP	\$1,429
5	3600	230/460	184T	120	0052XPEA41A-P	11.6/5.8	88.5	1	MTPXPP	\$1,305
5	3600	575	184T	120	0052XPEC41A-P	4.6	88.5	1	MTPXPP	\$1,305
5	1800	230/460	184T	120	0054XPEA41A-P	13.0/6.5	89.5	1	MTPXPP	\$1,275
5	1800	575	184T	120	0054XPEC41A-P	5.2	89.5	1	MTPXPP	\$1,275
5	1200	230/460	215T	213	0056XPEA41A-P	13.8/6.9	89.5	1	MTPXPP	\$1,840
5	1200	575	215T	213	0056XPEC41A-P	5.5	89.5	1	MTPXPP	\$1,840
7.5	3600	230/460	213T	237	Y752XPEA41A-P	18.0/9.0	89.5	1	MTPXPP	\$1,768
7.5	3600	575	213T	237	Y752XPEC41A-P	7.2	89.5	1	MTPXPP	\$1,768
7.5	1800	230/460	213T	221	Y754XPEA41A-P	19.6/9.8	91.7	1	MTPXPP	\$1,729
7.5	1800	575	213T	221	Y754XPEC41A-P	7.8	91.7	1	MTPXPP	\$1,729
7.5	1200	230/460	254T	327	Y756XPEA41A-P	20.4/10.2	91.0	1	MTPXPP	\$2,402
7.5	1200	575	254T	327	Y756XPEC41A-P	8.2	91.0	1	MTPXPP	\$2,402
10	3600	230/460	215T	237	0102XPEA41A-P	23.6/11.8	90.2	1	MTPXPP	\$1,861
10	3600	575	215T	237	0102XPEC41A-P	9.4	90.2	1	MTPXPP	\$1,861
10	1800	230/460	215T	221	0104XPEA41A-P	26.0/13.0	91.7	1	MTPXPP	\$2,015

## Totally Enclosed

### EQP Global XP Explosion Proof

> NEMA Premium® Efficiency

HP	Speed (RPM)	Volts	Frame	Weight (lbs.)	Model Number	FL Amps	Nominal FL EFF	Notes	Discount Symbol	List Price
10	1800	575	215T	221	0104XPEC41A-P	10.4	91.7	1	MTPXPP	\$2,015
10	1200	230/460	256T	314	0106XPEA41A-P	26.8/13.4	91.0	1	MTPXPP	\$2,942
10	1200	575	256T	314	0106XPEC41A-P	10.8	91.0	1	MTPXPP	\$2,942
15	3600	230/460	254T	373	0152XPEA41A-P	36.0/18.0	91.0	1	MTPXPP	\$2,421
15	3600	575	254T	373	0152XPEC41A-P	14.4	91.0	1	MTPXPP	\$2,421
15	1800	230/460	254T	373	0154XPEA41A-P	38.0/19.0	92.4	1	MTPXPP	\$2,782
15	1800	575	254T	373	0154XPEC41A-P	15.2	92.4	1	MTPXPP	\$2,782
15	1200	230/460	284T	436	0156XPEA41A-P	39.2/19.6	91.7	1	MTPXPP	\$4,017
15	1200	575	284T	436	0156XPEC41A-P	15.8	91.7	1	MTPXPP	\$4,017
20	3600	230/460	256T	386	0202XPEA41A-P	48.0/24.0	91.0	1	MTPXPP	\$3,263
20	3600	575	256T	386	0202XPEC41A-P	19.2	91.0	1	MTPXPP	\$3,263
20	1800	230/460	256T	373	0204XPEA41A-P	50.0/25.0	93.0	1	MTPXPP	\$3,261
20	1800	575	256T	373	0204XPEC41A-P	20.0	93.0	1	MTPXPP	\$3,261
20	1200	230/460	286T	540	0206XPEA41A-P	50.8/25.4	91.7	1	MTPXPP	\$4,553
20	1200	575	286T	540	0206XPEC41A-P	20.4	91.7	1	MTPXPP	\$4,553
25	3600	230/460	284TS	560	0252XPEA41B-P	58.0/29.0	91.7	1	MTPXPP	\$3,835
25	3600	575	284TS	560	0252XPEC41B-P	23.2	91.7	1	MTPXPP	\$3,835
25	1800	230/460	284T	584	0254XPEA41A-P	61.0/30.5	93.6	1	MTPXPP	\$4,391
25	1800	575	284T	584	0254XPEC41A-P	24.4	93.6	1	MTPXPP	\$4,391
25	1200	230/460	324T	689	0256XPEA41A-P	62.4/31.2	93.0	1	MTPXPP	\$5,609
25	1200	575	324T	689	0256XPEC41A-P	24.6	93.0	1	MTPXPP	\$5,609
30	3600	230/460	286TS	560	0302XPEA41B-P	70.0/35.0	91.7	1	MTPXPP	\$4,528
30	3600	575	286TS	560	0302XPEC41B-P	28.0	91.7	1	MTPXPP	\$4,528
30	1800	230/460	286T	550	0304XPEA41A-P	72.8/36.4	93.6	1	MTPXPP	\$4,667
30	1800	575	286T	550	0304XPEC41A-P	29.2	93.6	1	MTPXPP	\$4,667
30	1200	230/460	326T	702	0306XPEA41A-P	74.4/37.2	93.0	1	MTPXPP	\$6,853
30	1200	575	326T	702	0306XPEC41A-P	30.0	93.0	1	MTPXPP	\$6,853
40	3600	230/460	324TS	754	0402XPEA41B-P	94.0/47.0	92.4	1	MTPXPP	\$6,385
40	3600	575	324TS	754	0402XPEC41B-P	37.6	92.4	1	MTPXPP	\$6,385
40	1800	230/460	324T	735	0404XPEA41A-P	96.0/48.0	94.1	1	MTPXPP	\$6,635
40	1800	575	324T	735	0404XPEC41A-P	38.4	94.1	1	MTPXPP	\$6,635
40	1200	230/460	364T	856	0406XPEA41A-P	96.0/48.0	94.1	1	MTPXPP	\$9,011
40	1200	575	364T	856	0406XPEC41A-P	38.4	94.1	1	MTPXPP	\$9,011
50	3600	230/460	326TS	754	0502XPEA41B-P	116.0/58.0	93.0	1	MTPXPP	\$8,009
50	3600	575	326TS	754	0502XPEC41B-P	46.4	93.0	1	MTPXPP	\$8,009
50	1800	230/460	326T	735	0504XPEA41A-P	120.0/60.0	94.5	1	MTPXPP	\$7,645
50	1800	575	326T	735	0504XPEC41A-P	48.0	94.5	1	MTPXPP	\$7,645

## Totally Enclosed

### EQP Global XP Explosion Proof

> NEMA Premium® Efficiency

HP	Speed (RPM)	Volts	Frame	Weight (lbs.)	Model Number	FL Amps	Nominal FL EFF	Notes	Discount Symbol	List Price
50	1200	230/460	365T	932	0506XPEA41A-P	120.0/60.0	94.1	1	MTPXPP	\$9,097
50	1200	575	365T	932	0506XPEC41A-P	48.0	94.1	1	MTPXPP	\$9,097
60	3600	230/460	364TS	984	0602XPEA41B-P	138.0/69.0	93.6	1	MTPXPP	\$9,487
60	3600	575	364TS	984	0602XPEC41B-P	55.0	93.6	1	MTPXPP	\$9,487
60	1800	230/460	364T	961	0604XPEA41A-P	138.0/69.0	95.0	1	MTPXPP	\$9,459
60	1800	575	364T	961	0604XPEC41A-P	55.0	95.0	1	MTPXPP	\$9,459
75	3600	230/460	365TS	984	0752XPEA41B-P	172.0/86.0	93.6	1	MTPXPP	\$11,284
75	3600	575	365TS	984	0752XPEC41B-P	68.8	93.6	1	MTPXPP	\$11,284
75	1800	230/460	365T	1056	0754XPEA41A-P	172.0/86.0	95.4	1	MTPXPP	\$11,086
75	1800	575	365T	1056	0754XPEC41A-P	68.8	95.4	1	MTPXPP	\$11,086

**Totally Enclosed**  
**EQP Global XP Explosion Proof**  
**C-Face Footed**  
 > NEMA Premium® Efficiency



Effective Date: 6/10/14

HP	Speed (RPM)	Volts	Frame	Weight (lbs.)	Model Number	FL Amps	Nominal FL EFF	Notes	Discount Symbol	List Price
1	1800	230/460	143TC	75	0014XPEA42A-P	3.4/1.7	85.5	1	MTPXPP	\$1,081
1	1800	575	143TC	75	0014XPEC42A-P	1.3	85.5	1	MTPXPP	\$1,081
1	1200	230/460	145TC	75	0016XPEA42A-P	3.6/1.8	82.5	1	MTPXPP	\$1,144
1	1200	575	145TC	75	0016XPEC42A-P	1.5	82.5	1	MTPXPP	\$1,144
1.5	3600	230/460	143TC	77	Y152XPEA42A-P	4.0/2.0	84.0	1	MTPXPP	\$1,127
1.5	3600	575	143TC	77	Y152XPEC42A-P	1.6	84.0	1	MTPXPP	\$1,127
1.5	1800	230/460	145TC	74	Y154XPEA42A-P	4.8/2.4	86.5	1	MTPXPP	\$1,151
1.5	1800	575	145TC	74	Y154XPEC42A-P	1.9	86.5	1	MTPXPP	\$1,151
1.5	1200	230/460	182TC	82	Y156XPEA42A-P	5.0/2.5	87.5	1	MTPXPP	\$1,251
1.5	1200	575	182TC	82	Y156XPEC42A-P	2.0	87.5	1	MTPXPP	\$1,251
2	3600	230/460	145TC	77	0022XPEA42A-P	5.2/2.6	85.5	1	MTPXPP	\$1,158
2	3600	575	145TC	77	0022XPEC42A-P	2.1	85.5	1	MTPXPP	\$1,158
2	1800	230/460	145TC	77	0024XPEA42A-P	6.0/3.0	86.5	1	MTPXPP	\$1,157
2	1800	575	145TC	77	0024XPEC42A-P	2.4	86.5	1	MTPXPP	\$1,157
2	1200	230/460	184TC	114	0026XPEA42A-P	6.8/3.4	88.5	1	MTPXPP	\$1,403
2	1200	575	184TC	114	0026XPEC42A-P	2.7	88.5	1	MTPXPP	\$1,403
3	3600	230/460	182TC	120	0032XPEA42A-P	7.4/3.7	86.5	1	MTPXPP	\$1,330
3	3600	575	182TC	120	0032XPEC42A-P	3.0	86.5	1	MTPXPP	\$1,330
3	1800	230/460	182TC	118	0034XPEA42A-P	8.0/4.0	89.5	1	MTPXPP	\$1,425
3	1800	575	182TC	118	0034XPEC42A-P	3.2	89.5	1	MTPXPP	\$1,425
3	1200	230/460	213TC	198	0036XPEA42A-P	8.8/4.4	89.5	1	MTPXPP	\$1,757
3	1200	575	213TC	198	0036XPEC42A-P	3.5	89.5	1	MTPXPP	\$1,757
5	3600	230/460	184TC	120	0052XPEA42A-P	11.6/5.8	88.5	1	MTPXPP	\$1,578
5	3600	575	184TC	120	0052XPEC42A-P	4.6	88.5	1	MTPXPP	\$1,578
5	1800	230/460	184TC	120	0054XPEA42A-P	13.0/6.5	89.5	1	MTPXPP	\$1,548
5	1800	575	184TC	120	0054XPEC42A-P	5.2	89.5	1	MTPXPP	\$1,548
5	1200	230/460	215TC	213	0056XPEA42A-P	13.8/6.9	89.5	1	MTPXPP	\$2,168
5	1200	575	215TC	213	0056XPEC42A-P	5.5	89.5	1	MTPXPP	\$2,168
7.5	3600	230/460	213TC	237	Y752XPEA42A-P	18.0/9.0	89.5	1	MTPXPP	\$2,096
7.5	3600	575	213TC	237	Y752XPEC42A-P	7.2	89.5	1	MTPXPP	\$2,096
7.5	1800	230/460	213TC	221	Y754XPEA42A-P	19.6/9.8	91.7	1	MTPXPP	\$2,057
7.5	1800	575	213TC	221	Y754XPEC42A-P	7.8	91.7	1	MTPXPP	\$2,057
7.5	1200	230/460	254TC	327	Y756XPEA42A-P	20.4/10.2	91.0	1	MTPXPP	\$2,840
7.5	1200	575	254TC	327	Y756XPEC42A-P	8.2	91.0	1	MTPXPP	\$2,840
10	3600	230/460	215TC	237	0102XPEA42A-P	23.6/11.8	90.2	1	MTPXPP	\$2,189
10	3600	575	215TC	237	0102XPEC42A-P	9.4	90.2	1	MTPXPP	\$2,189
10	1800	230/460	215TC	221	0104XPEA42A-P	26.0/13.0	91.7	1	MTPXPP	\$2,343

## Totally Enclosed

## EQP Global XP Explosion Proof

## C-Face Footed

> NEMA Premium® Efficiency

HP	Speed (RPM)	Volts	Frame	Weight (lbs.)	Model Number	FL Amps	Nominal FL EFF	Notes	Discount Symbol	List Price
10	1800	575	215TC	221	0104XPEC42A-P	10.4	91.7	1	MTPXPP	\$2,343
10	1200	230/460	256TC	314	0106XPEA42A-P	26.8/13.4	91.0	1	MTPXPP	\$3,380
10	1200	575	256TC	314	0106XPEC42A-P	10.8	91.0	1	MTPXPP	\$3,380
15	3600	230/460	254TC	373	0152XPEA42A-P	36.0/18.0	91.0	1	MTPXPP	\$2,859
15	3600	575	254TC	373	0152XPEC42A-P	14.4	91.0	1	MTPXPP	\$2,859
15	1800	230/460	254TC	373	0154XPEA42A-P	38.0/19.0	92.4	1	MTPXPP	\$3,220
15	1800	575	254TC	373	0154XPEC42A-P	15.2	92.4	1	MTPXPP	\$3,220
15	1200	230/460	284TC	436	0156XPEA42A-P	39.2/19.6	91.7	1	MTPXPP	\$4,783
15	1200	575	284TC	436	0156XPEC42A-P	15.8	91.7	1	MTPXPP	\$4,783
20	3600	230/460	256TC	386	0202XPEA42A-P	48.0/24.0	91.0	1	MTPXPP	\$3,701
20	3600	575	256TC	386	0202XPEC42A-P	19.2	91.0	1	MTPXPP	\$3,701
20	1800	230/460	256TC	373	0204XPEA42A-P	50.0/25.0	93.0	1	MTPXPP	\$3,699
20	1800	575	256TC	373	0204XPEC42A-P	20.0	93.0	1	MTPXPP	\$3,699
20	1200	230/460	286TC	540	0206XPEA42A-P	50.8/25.4	91.7	1	MTPXPP	\$5,319
20	1200	575	286TC	540	0206XPEC42A-P	20.4	91.7	1	MTPXPP	\$5,319
25	3600	230/460	284TSC	560	0252XPEA42A-P	58.0/29.0	91.7	1	MTPXPP	\$4,601
25	3600	575	284TSC	560	0252XPEC42A-P	23.2	91.7	1	MTPXPP	\$4,601
25	1800	230/460	284TC	584	0254XPEA42A-P	61.0/30.5	93.6	1	MTPXPP	\$5,157
25	1800	575	284TC	584	0254XPEC42A-P	24.4	93.6	1	MTPXPP	\$5,157
25	1200	230/460	324TC	689	0256XPEA42A-P	62.4/31.2	93.0	1	MTPXPP	\$6,484
25	1200	575	324TC	689	0256XPEC42A-P	24.6	93.0	1	MTPXPP	\$6,484
30	3600	230/460	286TSC	560	0302XPEA42B-P	70.0/35.0	91.7	1	MTPXPP	\$5,294
30	3600	575	286TSC	560	0302XPEC42B-P	28.0	91.7	1	MTPXPP	\$5,294
30	1800	230/460	286TC	550	0304XPEA42A-P	72.8/36.4	93.6	1	MTPXPP	\$5,433
30	1800	575	286TC	550	0304XPEC42A-P	29.2	93.6	1	MTPXPP	\$5,433
30	1200	230/460	326TC	702	0306XPEA42A-P	74.4/37.2	93.0	1	MTPXPP	\$7,728
30	1200	575	326TC	702	0306XPEC42A-P	30.0	93.0	1	MTPXPP	\$7,728
40	3600	230/460	324TSC	754	0402XPEA42B-P	94.0/47.0	92.4	1	MTPXPP	\$7,260
40	3600	575	324TSC	754	0402XPEC42B-P	37.6	92.4	1	MTPXPP	\$7,260
40	1800	230/460	324TC	735	0404XPEA42A-P	96.0/48.0	94.1	1	MTPXPP	\$7,510
40	1800	575	324TC	735	0404XPEC42A-P	38.4	94.1	1	MTPXPP	\$7,510
40	1200	230/460	364TC	856	0406XPEA42A-P	96.0/48.0	94.1	1	MTPXPP	\$9,995
40	1200	575	364TC	856	0406XPEC42A-P	38.4	94.1	1	MTPXPP	\$9,995
50	3600	230/460	326TSC	754	0502XPEA42B-P	116.0/58.0	93.0	1	MTPXPP	\$8,884
50	3600	575	326TSC	754	0502XPEC42B-P	46.4	93.0	1	MTPXPP	\$8,884
50	1800	230/460	326TC	735	0504XPEA42A-P	120.0/60.0	94.5	1	MTPXPP	\$8,520
50	1800	575	326TC	735	0504XPEC42A-P	48.0	94.5	1	MTPXPP	\$8,520

## Totally Enclosed

## EQP Global XP Explosion Proof

## C-Face Footed

> NEMA Premium® Efficiency

HP	Speed (RPM)	Volts	Frame	Weight (lbs.)	Model Number	FL Amps	Nominal FL EFF	Notes	Discount Symbol	List Price
50	1200	230/460	365TC	932	0506XPEA42A-P	120.0/60.0	94.1	1	MTPXPP	\$10,081
50	1200	575	365TC	932	0506XPEC42A-P	48.0	94.1	1	MTPXPP	\$10,081
60	3600	230/460	364TSC	984	0602XPEA42B-P	138.0/69.0	93.6	1	MTPXPP	\$10,471
60	3600	575	364TSC	984	0602XPEC42B-P	55.0	93.6	1	MTPXPP	\$10,471
60	1800	230/460	364TC	961	0604XPEA42A-P	138.0/69.0	95.0	1	MTPXPP	\$10,443
60	1800	575	364TC	961	0604XPEC42A-P	55.0	95.0	1	MTPXPP	\$10,443
75	3600	230/460	365TSC	984	0752XPEA42B-P	172.0/86.0	93.6	1	MTPXPP	\$12,268
75	3600	575	365TSC	984	0752XPEC42B-P	68.8	93.6	1	MTPXPP	\$12,268
75	1800	230/460	365TC	1056	0754XPEA42A-P	172.0/86.0	95.4	1	MTPXPP	\$12,070
75	1800	575	365TC	1056	0754XPEC42A-P	68.8	95.4	1	MTPXPP	\$12,070



# Open Drip Proof

> Premium Efficiency

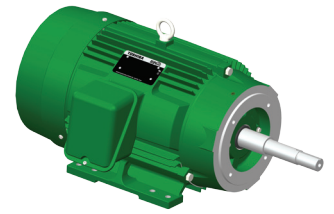


Effective Date: 6/10/14

HP	Speed (RPM)	Volts	Frame	Weight (lbs.)	Model Number	FL Amps	Nominal FL EFF	Notes	Discount Symbol	List Price
60	1200	230/460	404T	1010	0606DPSA31A-P	148/74	94.5	1	MCTDPP	\$7,304
75	1200	230/460	405T	1146	0756DPSA31A-P	184/92	94.5	1	MCTDPP	\$9,130
100	3600	230/460	365TS	565	1002DPSA31B-P	226/113	93.6	1	MCTDPP	\$7,078
100	1800	230/460	404T	1010	1004DPSA31A-P	230/115	95.4	1	MCTDPP	\$8,740
100	1200	230/460	444T	1442	1006DPSA31A-P	240/120	95.0	1	MCTDPP	\$11,988
125	3600	230/460	404TS	1010	1252DPSA31B-P	284/142	94.1	1	MCTDPP	\$9,915
125	1800	230/460	405T	1146	1254DPSA31A-P	287/143.5	95.4	1	MCTDPP	\$9,622
125	1200	230/460	445T	1647	1256DPSA31A-P	304/152	95.0	1	MCTDPP	\$14,582
150	3600	230/460	405TS	1124	1502DPSA31B-P	338/169	94.1	1	MCTDPP	\$10,767
150	1800	230/460	444T	1442	1504DPSA31A-P	346/173	95.8	1	MCTDPP	\$12,854
150	1200	230/460	447T	1938	1506DPSA31A-P	358/179	95.4	1	MCTDPP	\$17,222
200	3600	460	444TS	1391	2002DPSB31B-P	225	95.0	1	MCTDPP	\$13,736
200	1800	460	445T	1647	2004DPSB31A-P	228	95.8	1	MCTDPP	\$15,712
200	1200	460	449T	2300	2006DPSB31A-P	240	95.4	1	MCTDPP	\$20,257
250	3600	460	445TS	1596	2502DPSB31B-P	273	95.0	1	MCTDPP	\$18,427
250	1800	460	447T	1938	2504DPSB31A-P	278	95.8	1	MCTDPP	\$18,306
300	3600	460	447TS	1887	3002DPSB31B-P	329	95.4	1	MCTDPP	\$19,025
300	1800	460	449T	2300	3004DPSB31A-P	330	95.8	1	MCTDPP	\$23,783

# Totally Enclosed Fan Cooled EQP Global Close-Coupled Pump

➤ NEMA Premium® Efficiency



Effective Date: 6/10/14

HP	Speed (RPM)	Volts	Frame	Weight (lbs.)	JM Model #	JP Model #	FL Amps	Nominal FL EFF	Notes	Discount Symbol	List Price
1	1800	230/460	143JM/JP	51	0014SDJR41M-P	0014SDJR41P-P	3.4/1.7	85.5	1,9	MTPCCP	\$773
1	1800	575	143JM/JP	51	0014SDJC41M-P	0014SDJC41P-P	1.3	85.5	1,9	MTPCCP	\$773
1	1200	230/460	145JM/JP	56	0016SDJR41M-P	0016SDJR41P-P	3.6/1.8	82.5	1,9	MTPCCP	\$891
1	1200	575	145JM/JP	56	0016SDJC41M-P	0016SDJC41P-P	1.5	82.5	1,9	MTPCCP	\$891
1.5	3600	230/460	143JM/JP	50	Y152SDJR41M-P	Y152SDJR41P-P	4.0/2.0	84	1,9	MTPCCP	\$816
1.5	3600	575	143JM/JP	50	Y152SDJC41M-P	Y152SDJC41P-P	1.6	84	1,9	MTPCCP	\$816
1.5	1800	230/460	145JM/JP	53	Y154SDJR41M-P	Y154SDJR41P-P	4.8/2.4	86.5	1,9	MTPCCP	\$821
1.5	1800	575	145JM/JP	53	Y154SDJC41M-P	Y154SDJC41P-P	1.9	86.5	1,9	MTPCCP	\$821
1.5	1200	230/460	182JM/JP	79	Y156SDJR41M-P	Y156SDJR41P-P	5.0/2.5	87.5	1,9	MTPCCP	\$981
1.5	1200	575	182JM/JP	79	Y156SDJC41M-P	Y156SDJC41P-P	2	87.5	1,9	MTPCCP	\$981
2	3600	230/460	145JM/JP	53	0022SDJR41M-P	0022SDJR41P-P	5.2/2.6	85.5	1,9	MTPCCP	\$929
2	3600	575	145JM/JP	53	0022SDJC41M-P	0022SDJC41P-P	2.1	85.5	1,9	MTPCCP	\$929
2	1800	230/460	145JM/JP	56	0024SDJR41M-P	0024SDJR41P-P	6.0/3.0	86.5	1,9	MTPCCP	\$868
2	1800	575	145JM/JP	56	0024SDJC41M-P	0024SDJC41P-P	2.4	86.5	1,9	MTPCCP	\$868
2	1200	230/460	184JM/JP	93	0026SDJR41M-P	0026SDJR41P-P	6.8/3.4	88.5	1,9	MTPCCP	\$1,087
2	1200	575	184JM/JP	93	0026SDJC41M-P	0026SDJC41P-P	2.7	88.5	1,9	MTPCCP	\$1,087
3	3600	230/460	182JM/JP	77	0032SDJR41M-P	0032SDJR41P-P	7.4/3.7	86.5	1,9	MTPCCP	\$988
3	3600	575	182JM/JP	77	0032SDJC41M-P	0032SDJC41P-P	3	86.5	1,9	MTPCCP	\$988
3	1800	230/460	182JM/JP	86	0034SDJR41M-P	0034SDJR41P-P	8.0/4.0	89.5	1,9	MTPCCP	\$976
3	1800	575	182JM/JP	86	0034SDJC41M-P	0034SDJC41P-P	3.2	89.5	1,9	MTPCCP	\$976
3	1200	230/460	213JM/JP	147	0036SDJR41M-P	0036SDJR41P-P	8.8/4.4	89.5	1,9	MTPCCP	\$1,404
3	1200	575	213JM/JP	147	0036SDJC41M-P	0036SDJC41P-P	3.5	89.5	1,9	MTPCCP	\$1,404
5	3600	230/460	184JM/JP	91	0052SDJR41M-P	0052SDJR41P-P	11.6/5.8	88.5	1,9	MTPCCP	\$1,151
5	3600	575	184JM/JP	91	0052SDJC41M-P	0052SDJC41P-P	4.6	88.5	1,9	MTPCCP	\$1,151
5	1800	230/460	184JM/JP	97	0054SDJR41M-P	0054SDJR41P-P	13.0/6.5	89.5	1,9	MTPCCP	\$1,071
5	1800	575	184JM/JP	97	0054SDJC41M-P	0054SDJC41P-P	5.2	89.5	1,9	MTPCCP	\$1,071
5	1200	230/460	215JM/JP	165	0056SDJR41M-P	0056SDJR41P-P	13.8/6.9	89.5	1,9	MTPCCP	\$1,962
5	1200	575	215JM/JP	165	0056SDJC41M-P	0056SDJC41P-P	5.5	89.5	1,9	MTPCCP	\$1,962
7.5	3600	230/460	213JM/JP	155	Y752SDJR41M-P	Y752SDJR41P-P	18.0/9.0	89.5	1,9	MTPCCP	\$1,421
7.5	3600	575	213JM/JP	155	Y752SDJC41M-P	Y752SDJC41P-P	7.2	89.5	1,9	MTPCCP	\$1,421
7.5	1800	230/460	213JM/JP	171	Y754SDJR41M-P	Y754SDJR41P-P	19.6/9.8	91.7	1,9	MTPCCP	\$1,421
7.5	1800	575	213JM/JP	171	Y754SDJC41M-P	Y754SDJC41P-P	7.8	91.7	1,9	MTPCCP	\$1,421
7.5	1200	230/460	254JM/JP	252	Y756SDJR41M-P	Y756SDJR41P-P	20.4/10.2	91	1,9	MTPCCP	\$2,525
7.5	1200	575	254JM/JP	252	Y756SDJC41M-P	Y756SDJC41P-P	8.2	91	1,9	MTPCCP	\$2,525
10	3600	230/460	215JM/JP	172	0102SDJR41M-P	0102SDJR41P-P	23.6/11.8	90.2	1,9	MTPCCP	\$1,656
10	3600	575	215JM/JP	172	0102SDJC41M-P	0102SDJC41P-P	9.4	90.2	1,9	MTPCCP	\$1,656
10	1800	230/460	215JM/JP	186	0104SDJR41M-P	0104SDJR41P-P	26.0/13.0	91.7	1,9	MTPCCP	\$1,677

# Totally Enclosed Fan Cooled EQP Global Close-Coupled Pump

> NEMA Premium® Efficiency

HP	Speed (RPM)	Volts	Frame	Weight (lbs.)	JM Model #	JP Model #	FL Amps	Nominal FL EFF	Notes	Discount Symbol	List Price
10	1800	575	215JM/JP	186	0104SDJC41M-P	0104SDJC41P-P	10.4	91.7	1,9	MTPCCP	\$1,677
10	1200	230/460	256JM/JP	274	0106SDJR41M-P	0106SDJR41P-P	26.8/13.4	91	1,9	MTPCCP	\$3,012
10	1200	575	256JM/JP	274	0106SDJC41M-P	0106SDJC41P-P	10.8	91	1,9	MTPCCP	\$3,012
15	3600	230/460	254JM/JP	274	0152SDJR41M-P	0152SDJR41P-P	36.0/18.0	91	1,9	MTPCCP	\$2,304
15	3600	575	254JM/JP	274	0152SDJC41M-P	0152SDJC41P-P	14.4	91	1,9	MTPCCP	\$2,304
15	1800	230/460	254JM/JP	289	0154SDJR41M-P	0154SDJR41P-P	38.0/19.0	92.4	1,9	MTPCCP	\$2,295
15	1800	575	254JM/JP	289	0154SDJC41M-P	0154SDJC41P-P	15.2	92.4	1,9	MTPCCP	\$2,295
15	1200	230/460	284JM/JP	364	0156SDJR41M-P	0156SDJR41P-P	39.2/19.6	91.7	1,9	MTPCCP	\$4,310
15	1200	575	284JM/JP	364	0156SDJC41M-P	0156SDJC41P-P	15.8	91.7	1,9	MTPCCP	\$4,310
20	3600	230/460	256JM/JP	292	0202SDJR41M-P	0202SDJR41P-P	48.0/24.0	91	1,9	MTPCCP	\$2,894
20	3600	575	256JM/JP	292	0202SDJC41M-P	0202SDJC41P-P	19.2	91	1,9	MTPCCP	\$2,894
20	1800	230/460	256JM/JP	340	0204SDJR41M-P	0204SDJR41P-P	50.0/25.0	93	1,9	MTPCCP	\$2,762
20	1800	575	256JM/JP	340	0204SDJC41M-P	0204SDJC41P-P	20	93	1,9	MTPCCP	\$2,762
20	1200	230/460	286JM/JP	411	0206SDJR41M-P	0206SDJR41P-P	50.8/25.4	91.7	1,9	MTPCCP	\$4,955
20	1200	575	286JM/JP	411	0206SDJC41M-P	0206SDJC41P-P	20.4	91.7	1,9	MTPCCP	\$4,955
25	3600	230/460	284JM/JP	406	0252SDJR41M-P	0252SDJR41P-P	58.0/29.0	91.7	1,9	MTPCCP	\$3,686
25	3600	575	284JM/JP	406	0252SDJC41M-P	0252SDJC41P-P	23.2	91.7	1,9	MTPCCP	\$3,686
25	1800	230/460	284JM/JP	424	0254SDJR41M-P	0254SDJR41P-P	61.0/30.5	93.6	1,9	MTPCCP	\$3,722
25	1800	575	284JM/JP	424	0254SDJC41M-P	0254SDJC41P-P	24.4	93.6	1,9	MTPCCP	\$3,722
25	1200	230/460	324JM/JP	545	0256SDJR41M-P	0256SDJR41P-P	62.4/31.2	93	1,9	MTPCCP	\$5,592
25	1200	575	324JM/JP	545	0256SDJC41M-P	0256SDJC41P-P	24.6	93	1,9	MTPCCP	\$5,592
30	3600	230/460	286JM/JP	439	0302SDJR41M-P	0302SDJR41P-P	70.0/35.0	91.7	1,9	MTPCCP	\$4,160
30	3600	575	286JM/JP	439	0302SDJC41M-P	0302SDJC41P-P	28	91.7	1,9	MTPCCP	\$4,160
30	1800	230/460	286JM/JP	448	0304SDJR41M-P	0304SDJR41P-P	72.8/36.4	93.6	1,9	MTPCCP	\$4,365
30	1800	575	286JM/JP	448	0304SDJC41M-P	0304SDJC41P-P	29.2	93.6	1,9	MTPCCP	\$4,365
30	1200	230/460	326JM/JP	571	0306SDJR41M-P	0306SDJR41P-P	74.4/37.2	93	1,9	MTPCCP	\$6,700
30	1200	575	326JM/JP	571	0306SDJC41M-P	0306SDJC41P-P	30	93	1,9	MTPCCP	\$6,700
40	3600	230/460	324JM/JP	589	0402SDJR41M-P	0402SDJR41P-P	94.0/47.0	92.4	1,9	MTPCCP	\$5,169
40	3600	575	324JM/JP	589	0402SDJC41M-P	0402SDJC41P-P	37.6	92.4	1,9	MTPCCP	\$5,169
40	1800	230/460	324JM/JP	593	0404SDJR41M-P	0404SDJR41P-P	96.0/48.0	94.1	1,9	MTPCCP	\$5,551
40	1800	575	324JM/JP	593	0404SDJC41M-P	0404SDJC41P-P	38.4	94.1	1,9	MTPCCP	\$5,551
40	1200	230/460	364JM/JP	708	0406SDJR41M-P	-	96.0/48.0	94.1	1,9	MTPCCP	\$8,972
40	1200	575	364JM/JP	708	0406SDJC41M-P	-	38.4	94.1	1,9	MTPCCP	\$8,972
50	3600	230/460	326JM/JP	624	0502SDJR41M-P	0502SDJR41P-P	116.0/58.0	93	1,9	MTPCCP	\$6,945
50	3600	575	326JM/JP	624	0502SDJC41M-P	0502SDJC41P-P	46.4	93	1,9	MTPCCP	\$6,945
50	1800	230/460	326JM/JP	651	0504SDJR41M-P	0504SDJR41P-P	120.0/60.0	94.5	1,9	MTPCCP	\$6,220
50	1800	575	326JM/JP	651	0504SDJC41M-P	0504SDJC41P-P	48	94.5	1,9	MTPCCP	\$6,220

## Totally Enclosed Fan Cooled EQP Global Close-Coupled Pump

> NEMA Premium® Efficiency

HP	Speed (RPM)	Volts	Frame	Weight (lbs.)	JM Model #	JP Model #	FL Amps	Nominal FL EFF	Notes	Discount Symbol	List Price
50	1200	230/460	365JM/JP	757	0506SDJR41M-P	-	120.0/60.0	94.1	1,9	MTPCCP	\$10,313
50	1200	575	365JM/JP	757	0506SDJC41M-P	-	48	94.1	1,9	MTPCCP	\$10,313
60	3600	230/460	364JM/JP	763	0602SDJR41M-P	-	138.0/69.0	93.6	1,9	MTPCCP	\$8,807
60	3600	575	364JM/JP	763	0602SDJC41M-P	-	55	93.6	1,9	MTPCCP	\$8,807
60	1800	230/460	364JM/JP	796	0604SDJR41M-P	-	138.0/69.0	95	1,9	MTPCCP	\$8,913
60	1800	575	364JM/JP	796	0604SDJC41M-P	-	55	95	1,9	MTPCCP	\$8,913
75	3600	230/460	365JM/JP	814	0752SDJR41M-P	-	172.0/86.0	93.6	1,9	MTPCCP	\$10,843
75	3600	575	365JM/JP	814	0752SDJC41M-P	-	68.8	93.6	1,9	MTPCCP	\$10,843
75	1800	230/460	365JM/JP	893	0754SDJR41M-P	-	172.0/86.0	95.4	1,9	MTPCCP	\$11,207
75	1800	575	365JM/JP	893	0754SDJC41M-P	-	68.8	95.4	1,9	MTPCCP	\$11,207

# Totally Enclosed Fan Cooled

## EQP Global Top-Mount

> NEMA Premium® Efficiency



Effective Date: 6/10/2014

HP	Speed (RPM)	Volts	Frame	Weight (lbs.)	Model Number	FL Amps	Nominal FL EFF	Notes	Discount Symbol	List Price
1	1800	230/460	143T	51	0014SDSR41A-P3	3.4/1.7	85.5	1,9	MTPFCP	\$480
1	1800	575	143T	51	0014SDSC41A-P3	1.3	85.5	1,9	MTPFCP	\$480
1	1200	230/460	145T	56	0016SDSR41A-P3	3.6/1.8	82.5	1,9	MTPFCP	\$576
1	1200	575	145T	56	0016SDSC41A-P3	1.5	82.5	1,9	MTPFCP	\$576
1.5	3600	230/460	143T	50	Y152SDSR41A-P3	4.0/2.0	84	1,9	MTPFCP	\$523
1.5	3600	575	143T	50	Y152SDSC41A-P3	1.6	84	1,9	MTPFCP	\$523
1.5	1800	230/460	145T	53	Y154SDSR41A-P3	4.8/2.4	86.5	1,9	MTPFCP	\$528
1.5	1800	575	145T	53	Y154SDSC41A-P3	1.9	86.5	1,9	MTPFCP	\$528
1.5	1200	230/460	182T	79	Y156SDSR41A-P3	5.0/2.5	87.5	1,9	MTPFCP	\$637
1.5	1200	575	182T	79	Y156SDSC41A-P3	2	87.5	1,9	MTPFCP	\$637
2	3600	230/460	145T	53	0022SDSR41A-P3	5.2/2.6	85.5	1,9	MTPFCP	\$633
2	3600	575	145T	53	0022SDSC41A-P3	2.1	85.5	1,9	MTPFCP	\$633
2	1800	230/460	145T	56	0024SDSR41A-P3	6.0/3.0	86.5	1,9	MTPFCP	\$573
2	1800	575	145T	56	0024SDSC41A-P3	2.4	86.5	1,9	MTPFCP	\$573
2	1200	230/460	184T	93	0026SDSR41A-P3	6.8/3.4	88.5	1,9	MTPFCP	\$738
2	1200	575	184T	93	0026SDSC41A-P3	2.7	88.5	1,9	MTPFCP	\$738
3	3600	230/460	182T	77	0032SDSR41A-P3	7.4/3.7	86.5	1,9	MTPFCP	\$670
3	3600	575	182T	77	0032SDSC41A-P3	3	86.5	1,9	MTPFCP	\$670
3	1800	230/460	182T	86	0034SDSR41A-P3	8.0/4.0	89.5	1,9	MTPFCP	\$658
3	1800	575	182T	86	0034SDSC41A-P3	3.2	89.5	1,9	MTPFCP	\$658
3	1200	230/460	213T	147	0036SDSR41A-P3	8.8/4.4	89.5	1,9	MTPFCP	\$938
3	1200	575	213T	147	0036SDSC41A-P3	3.5	89.5	1,9	MTPFCP	\$938
5	3600	230/460	184T	91	0052SDSR41A-P3	11.6/5.8	88.5	1,9	MTPFCP	\$830
5	3600	575	184T	91	0052SDSC41A-P3	4.6	88.5	1,9	MTPFCP	\$830
5	1800	230/460	184T	97	0054SDSR41A-P3	13.0/6.5	89.5	1,9	MTPFCP	\$751
5	1800	575	184T	97	0054SDSC41A-P3	5.2	89.5	1,9	MTPFCP	\$751
5	1200	230/460	215T	165	0056SDSR41A-P3	13.8/6.9	89.5	1,9	MTPFCP	\$1,379
5	1200	575	215T	165	0056SDSC41A-P3	5.5	89.5	1,9	MTPFCP	\$1,379
7.5	3600	230/460	213T	155	Y752SDSR41A-P3	18.0/9.0	89.5	1,9	MTPFCP	\$1,075
7.5	3600	575	213T	155	Y752SDSC41A-P3	7.2	89.5	1,9	MTPFCP	\$1,075
7.5	1800	230/460	213T	171	Y754SDSR41A-P3	19.6/9.8	91.7	1,9	MTPFCP	\$1,075
7.5	1800	575	213T	171	Y754SDSC41A-P3	7.8	91.7	1,9	MTPFCP	\$1,075
7.5	1200	230/460	254T	252	Y756SDSR41A-P3	20.4/10.2	91	1,9	MTPFCP	\$1,830
7.5	1200	575	254T	252	Y756SDSC41A-P3	8.2	91	1,9	MTPFCP	\$1,830
10	3600	230/460	215T	172	0102SDSR41A-P3	23.6/11.8	90.2	1,9	MTPFCP	\$1,290
10	3600	575	215T	172	0102SDSC41A-P3	9.4	90.2	1,9	MTPFCP	\$1,290

# Totally Enclosed Fan Cooled

## EQP Global Top-Mount

> NEMA Premium® Efficiency

HP	Speed (RPM)	Volts	Frame	Weight (lbs.)	Model Number	FL Amps	Nominal FL EFF	Notes	Discount Symbol	List Price
10	1800	230/460	215T	186	0104SDSR41A-P3	26.0/13.0	91.7	1,9	MTPFCP	\$1,308
10	1800	575	215T	186	0104SDSC41A-P3	10.4	91.7	1,9	MTPFCP	\$1,308
10	1200	230/460	256T	274	0106SDSR41A-P3	26.8/13.4	91	1,9	MTPFCP	\$2,236
10	1200	575	256T	274	0106SDSC41A-P3	10.8	91	1,9	MTPFCP	\$2,236
15	3600	230/460	254T	274	0152SDSR41A-P3	36.0/18.0	91	1,9	MTPFCP	\$1,774
15	3600	575	254T	274	0152SDSC41A-P3	14.4	91	1,9	MTPFCP	\$1,774
15	1800	230/460	254T	289	0154SDSR41A-P3	38.0/19.0	92.4	1,9	MTPFCP	\$1,766
15	1800	575	254T	289	0154SDSC41A-P3	15.2	92.4	1,9	MTPFCP	\$1,766
15	1200	230/460	284T	364	0156SDSR41A-P3	39.2/19.6	91.7	1,9	MTPFCP	\$3,135
15	1200	575	284T	364	0156SDSC41A-P3	15.8	91.7	1,9	MTPFCP	\$3,135
20	3600	230/460	256T	292	0202SDSR41A-P3	48.0/24.0	91	1,9	MTPFCP	\$2,298
20	3600	575	256T	292	0202SDSC41A-P3	19.2	91	1,9	MTPFCP	\$2,298
20	1800	230/460	256T	340	0204SDSR41A-P3	50.0/25.0	93	1,9	MTPFCP	\$2,181
20	1800	575	256T	340	0204SDSC41A-P3	20	93	1,9	MTPFCP	\$2,181
20	1200	230/460	286T	411	0206SDSR41A-P3	50.8/25.4	91.7	1,9	MTPFCP	\$3,672
20	1200	575	286T	411	0206SDSC41A-P3	20.4	91.7	1,9	MTPFCP	\$3,672
25	3600	230/460	284TS	406	0252SDSR41B-P3	58.0/29.0	91.7	1,9	MTPFCP	\$2,820
25	3600	575	284TS	406	0252SDSC41B-P3	23.2	91.7	1,9	MTPFCP	\$2,820
25	1800	230/460	284T	424	0254SDSR41A-P3	61.0/30.5	93.6	1,9	MTPFCP	\$2,645
25	1800	575	284T	424	0254SDSC41A-P3	24.4	93.6	1,9	MTPFCP	\$2,645
25	1200	230/460	324T	545	0256SDSR41A-P3	62.4/31.2	93	1,9	MTPFCP	\$4,457
25	1200	575	324T	545	0256SDSC41A-P3	24.6	93	1,9	MTPFCP	\$4,457
30	3600	230/460	286TS	439	0302SDSR41B-P3	70.0/35.0	91.7	1,9	MTPFCP	\$3,241
30	3600	575	286TS	439	0302SDSC41B-P3	28	91.7	1,9	MTPFCP	\$3,241
30	1800	230/460	286T	448	0304SDSR41A-P3	72.8/36.4	93.6	1,9	MTPFCP	\$3,181
30	1800	575	286T	448	0304SDSC41A-P3	29.2	93.6	1,9	MTPFCP	\$3,181
30	1200	230/460	326T	571	0306SDSR41A-P3	74.4/37.2	93	1,9	MTPFCP	\$5,441
30	1200	575	326T	571	0306SDSC41A-P3	30	93	1,9	MTPFCP	\$5,441
40	3600	230/460	324TS	589	0402SDSR41B-P3	94.0/47.0	92.4	1,9	MTPFCP	\$4,081
40	3600	575	324TS	589	0402SDSC41B-P3	37.6	92.4	1,9	MTPFCP	\$4,081
40	1800	230/460	324T	593	0404SDSR41A-P3	96.0/48.0	94.1	1,9	MTPFCP	\$4,112
40	1800	575	324T	593	0404SDSC41A-P3	38.4	94.1	1,9	MTPFCP	\$4,112
40	1200	230/460	364T	708	0406SDSR41A-P3	96.0/48.0	94.1	1,9	MTPFCP	\$7,119
40	1200	575	364T	708	0406SDSC41A-P3	38.4	94.1	1,9	MTPFCP	\$7,119
50	3600	230/460	326TS	624	0502SDSR41B-P3	116.0/58.0	93	1,9	MTPFCP	\$5,658
50	3600	575	326TS	624	0502SDSC41B-P3	46.4	93	1,9	MTPFCP	\$5,658
50	1800	230/460	326T	651	0504SDSR41A-P3	120.0/60.0	94.5	1,9	MTPFCP	\$5,015

## Totally Enclosed Fan Cooled

### EQP Global Top-Mount

> NEMA Premium® Efficiency

HP	Speed (RPM)	Volts	Frame	Weight (lbs.)	Model Number	FL Amps	Nominal FL EFF	Notes	Discount Symbol	List Price
50	1800	575	326T	651	0504SDSC41A-P3	48	94.5	1,9	MTPFCP	\$5,015
50	1200	230/460	365T	757	0506SDSR41A-P3	120.0/60.0	94.1	1,9	MTPFCP	\$8,310
50	1200	575	365T	757	0506SDSC41A-P3	48	94.1	1,9	MTPFCP	\$8,310
60	3600	230/460	364TS	763	0602SDSR41B-P3	138.0/69.0	93.6	1,9	MTPFCP	\$6,973
60	3600	575	364TS	763	0602SDSC41B-P3	55	93.6	1,9	MTPFCP	\$6,973
60	1800	230/460	364T	796	0604SDSR41A-P3	138.0/69.0	95	1,9	MTPFCP	\$7,067
60	1800	575	364T	796	0604SDSC41A-P3	55	95	1,9	MTPFCP	\$7,067
75	3600	230/460	365TS	814	0752SDSR41B-P3	172.0/86.0	93.6	1,9	MTPFCP	\$8,781
75	3600	575	365TS	814	0752SDSC41B-P3	68.8	93.6	1,9	MTPFCP	\$8,781
75	1800	230/460	365T	893	0754SDSR41A-P3	172.0/86.0	95.4	1,9	MTPFCP	\$9,104
75	1800	575	365T	893	0754SDSC41A-P3	68.8	95.4	1,9	MTPFCP	\$9,104

**TOSHIBA**  
Leading Innovation >>>

**TOSHIBA INTERNATIONAL CORPORATION**

13131 West Little York Road • Houston, TX 77041  
Tel: 713-466-0277 Fax: 713-466-8773  
US: 800-231-1412 Canada: 800-872-2792 Mexico: 800-527-1204

**[www.toshiba.com/motors](http://www.toshiba.com/motors)**