

Mounted Spherical Roller Bearings and Take-up Units

INTERCHANGE 2000 Pillow Blocks



IDC SELECT "CA" SERIES



LINKBELT PB22400
SKF SYR
REX ZA
DODGE S2000
BROWNING SPB1000

Shaft Dia	IDC	REX	LINKBELT	DODGE	BROWNING	SKF
1-7/16	CA2107	ZA2107	PB22423	P2B-S2-107R	SPB1000NE1-7/16	SYR1-7/16
1-1/2	CA2108	ZA2108	PB22424	P2B-S2-108R	SPB1000NE1-1/2	SYR 1-1/2
1-11/16	CA2111	ZA2111	PB22427	P2B-S2-111R	SPB1000NE1-11/16	SYR1-11/16
1-3/4	CA2112	ZA2112	PB22428	P2B-S2-112R	SPB1000NE1-3/4	SYR 1-3/4
1-15/16	CA2115	ZA2115	PB22431	P2B-S2-115R	SPB1000NE1-15/16	SYR1-15/16
2	CA2200	ZA2200	PB22432	P2B-S2-200R	SPB1000NE2	SYR 2
2-3/16	CA2203	ZA2203	PB22435	P2B-S2-203R	SPB1000NE2-3/16	SYR2-3/16
2-7/16	CA2207	ZA2207	PB22439	P2B-S2-207R	SPB1000NE2-7/16	SYR2-7/16
2-1/2	CA2208	ZA2208	PB22440	P2B-S2-208R	SPB1000NE3	SYR 2-1/2
2-15/16	CA2215	ZA2215	PB22447	P2B-S2-215R	SPB1000NE2-15/16	SYR2-15/16
3	CA2300	ZA2300	PB22448	P2B-S2-300R	SPB1000NE3	SYR 3
3-7/16	CA2307	ZA2307	PB22455	P2B-S2-307R	SPB1000NE3-7/16	SYR3-7/16
3-1/2	CA2308	ZA2308	PB22456	P2B-S2-308R	SPB1000NE3-1/2	SYR 3-1/2
3-15/16	CA2315	ZA2315	PB22463	P2B-S2-315R	SPB1000NE3-15/16	SYR3-15/16
4	CA2400	ZA2400	PB22464	P2B-S2-400R	SPB1000NE4	SYR 4

NOTE: Contact IDC Customer Service for any styles or part numbers not listed above. IDC Select Bearings are available in both expansion and non expansion housing styles and are supplied with (3) different seal arrangements, special lubrications, and many other application specific requirements.

IDC SELECT 2000 SERIES BEARINGS SHIP STANDARD AS NON-EXPANSION. HOWEVER, ALL IDC SELECT BEARINGS ARE AVAILABLE AS EXPANSION BY ADDING "EXP" AS THE SUFFIX TO THE PART NUMBER. BEARINGS CAN ALSO BE EASILY CONVERTED IN THE FIELD BY REMOVING A SNAP RING. CONTACT YOUR IDC CUSTOMER SERVICE FOR MORE DETAILS.

Mounted Spherical Roller Bearings and Take-up Units

INTERCHANGE 2000 Cartridge Flange Blocks



IDC SELECT "CBR" SERIES



LINKBELT FCB22400
SKF FYRP
REX ZBR
DODGE S2000
BROWNING SFB1000

Shaft Dia	IDC	REX	LINKBELT	DODGE	BROWNING	SKF
1-7/16	CBRP2107	ZBR2107	FCB22423	F3R-S2-107R	SFB1000NE1-7/16	FRYP1-7/16
1-1/2	CBR2108	ZBR2108	FCB22424	F3R-S2-108R	SFB1000NE1-1/2	FRYP 1-1/2
1-11/16	CBR2111	ZBR2111	FCB22427	F4R-S2-111R	SFB1000NE1-11/16	FYRP1-11/16
1-3/4	CBR2112	ZBR2112	FCB22428	F4R-S2-112R	SFB1000NE1-3/4	FRYP 1-3/4
1-15/16	CBR2115	ZBR2115	FCB22431	F4R-S2-115R	SFB1000NE1-15/16	FYRP1-15/16
2	CBR2200	ZBR2200	FCB22432	F4R-S2-200R	SFB1000NE2	FYRP 2
2-3/16	CBR2203	ZBR2203	FCB22435	F4R-S2-203R	SFB1000NE2-3/16	FYRP2-3/16
2-7/16	CBR2207	ZBR 2207	FCB22439	F4R-S2-207R	SFB1000NE2-7/16	FYRP2-7/16
2-1/2	CBR2208	ZBR2208	FCB22440	F4R-S2-208R	SFB1000NE3	FYRP 2-1/2
2-15/16	CBR2215	ZBR2215	FCB22447	F4R-S2-215R	SFB1000NE2-15/16	FYRP2-15/16
3	CBR2300	ZBR2300	FCB22448	F4R-S2-300R	SFB1000NE3	FYRP 3
3-7/16	CBR2307	ZBR2307	FCB22455		SFB1000NE3-7/16	FYRP3-7/16
3-1/2	CBR2308	ZBR2308	FCB22456		SFB1000NE3-1/2	FYRP 3-1/2
3-15/16	CBR2315	ZBR2315	FCB22463		SFB1000NE3-15/16	FYRP3-15/16
4	CBR2400	ZBR2400	FCB22464		SFB1000NE4	FYRP4

NOTE: Contact IDC Customer Service for any styles or part numbers not listed above. IDC Select Bearings are available in both expansion and non expansion housing styles and are supplied with (3) different seal arrangements, special lubrications, and many other application specific requirements.

IDC SELECT 2000 SERIES BEARINGS SHIP STANDARD AS NON-EXPANSION. HOWEVER, ALL IDC SELECT BEARINGS ARE AVAILABLE AS EXPANSION BY ADDING "EXP" AS THE SUFFIX TO THE PART NUMBER. BEARINGS CAN ALSO BE EASILY CONVERTED IN THE FIELD BY REMOVING A SNAP RING. CONTACT YOUR IDC CUSTOMER SERVICE FOR MORE DETAILS.

Mounted Spherical Roller Bearings and Take-up Units

INTERCHANGE

2000 Flange Blocks



IDC SELECT "CB" SERIES



LINKBELT FB22400
 SKF FYR
 REX ZB
 DODGE S2000
 BROWNING SFC1000

Shaft Dia	IDC	REX	LINKBELT	DODGE	BROWNING	SKF
1-7/16	CB2107	ZB2107	FB22423	FC-S2-107R	SFC1000NE1-7/16	FYR1-7/16
1-1/2	CB2108	ZB2108	FB22424	FC-S2-108R	SFC1000NE1-1/2	FYR 1-1/2
1-11/16		ZB2111	FB22427	FC-S2-111R	SFC1000NE1-11/16	FYR1-11/16
1-3/4		ZB2112	FB22428	FC-S2-112R	SFC1000NE1-3/4	FYR 1-3/4
1-15/16	CB2115	ZB2115	FB22431	FC-S2-115R	SFC1000NE1-15/16	FYR1-15/16
2	CB2200	ZB2200	FB22432	FC-S2-2007R	SFC1000NE2	FYR 2
2-3/16	CB2203	ZB2203	FB22435	FC-S2-203R	SFC1000NE2-3/16	FYR2-3/16
2-7/16	CB2207	ZB 2207	FB22439	FC-S2-207R	SFC1000NE2-7/16	FYR2-7/16
2-1/2	CB2208	ZB2208	FB22440	FC-S2-207R	SFC1000NE3	FYR 2-1/2
2-15/16	CB2215	ZB2215	FB22447	FC-S2-215R	SFC1000NE2-15/16	FYR2-15/16
3	CB2300	ZB2300	FB22448	FC-S2-300R	SFC1000NE3	FYR 3
3-7/16	CB2307	ZB2307	FB22455	FC-S2-307R	SCB1000NE3-7/16	FYR3-7/16
3-1/2	CB2308	ZB2308	FB22456	FC-S2-308R	SCB1000NE3-1/2	FYR 3-1/2
3-15/16	CB2315	ZB2315	FB22463	FC-S2-315R	SCB1000NE3-15/16	FYR3-15/16
4	CB2400	ZB2400	FB22464	FC-S2-400R	SCB1000NE4	FYR 4

NOTE: Contact IDC Customer Service for any styles or part numbers not listed above. IDC Select Bearings are available in both expansion and non expansion housing styles and are supplied with (3) different seal arrangements, special lubrications, and many other application specific requirements.

IDC SELECT 2000 SERIES BEARINGS SHIP STANDARD AS NON-EXPANSION. HOWEVER, ALL IDC SELECT BEARINGS ARE AVAILABLE AS EXPANSION BY ADDING "EXP" AS THE SUFFIX TO THE PART NUMBER. BEARINGS CAN ALSO BE EASILY CONVERTED IN THE FIELD BY REMOVING A SNAP RING. CONTACT YOUR IDC CUSTOMER SERVICE FOR MORE DETAILS.

Mounted Spherical Roller Bearings and Take-up Units

INTERCHANGE

Type "E" Pillow Block

2 Bolt



IDC SELECT Type "E" SERIES



LINKBELT PEB
SKF SYE
REX ZEP
DODGE Type "E"
BROWNING PB 900

Shaft Dia	IDC	REX	LINKBELT	DODGE	BROWNING	SKF
1-7/16	CEP2107	ZBR2107	PEB22423	P2B-E-107R	PB920 1-7/16	SYE1-7/16
1-1/2	CEP2108	ZBR2108	PEB22424	P2B-E-108R	PB920 1-1/2	SYE 1-1/2
1-11/16		ZBR2111	PEB22447	P2B-E-111R	PB920 1-11/16	SYE1-11/16
1-3/4		ZBR2112	PEB22448	P2B-E-112R	PB920 1-3/4	SYE 1-3/4
1-15/16	CEP2115	ZBR2115	PEB22431	P2B-E-115R	PB920 1-15/16	SYE1-15/16
2	CEP2200	ZBR2200	PEB22432	P2B-E-200R	PB920 2	SYE 2
2-3/16	CEP2203	ZBR2203	PEB22435	P2B-E-203R	PB920 2-3/16	SYE2-3/16
2-7/16	CEP2207	ZBR 2207	PEB22439	P2B-E-207R	PB920 2-7/16	SYE2-7/16
2-1/2	CEP2208	ZBR2208	PEB22440	P2B-E-208R	PB920 3	SYE 2-1/2
2-15/16	CEP2215	ZBR2215	PEB22447	P2B-E-215R	PB920 2-15/16	SYE2-15/16
3	CEP2300	ZBR2300	PEB22448	P2B-E-300R	PB920 3	SYE 3
3-7/16	CEP2307	ZBR2307	PEB22455	P2B-E-307R	PB920 3-7/16	SYE3-7/16
3-1/2	CEP2308	ZBR2308	PEB22456	P2B-E-308R	PB920 3-1/2	SYE 3-1/2
3-15/16	CEP2315	ZBR2315	PEB22463	P2B-E-315R	PB920 3-15/16	SYE3-15/16
4	CEP2400	ZBR2400	PEB22464	P2B-E-400R	PB920 4	SYE 4

NOTE: Contact IDC Customer Service for any styles or part numbers not listed above. IDC Select Bearings are available in both expansion and non expansion housing styles and are supplied with (3) different seal arrangements, special lubrications, and many other application specific requirements.

IDC SELECT 2000 SERIES BEARINGS SHIP STANDARD AS NON-EXPANSION. HOWEVER, ALL IDC SELECT BEARINGS ARE AVAILABLE AS EXPANSION BY ADDING "EXP" AS THE SUFFIX TO THE PART NUMBER. BEARINGS CAN ALSO BE EASILY CONVERTED IN THE FIELD BY REMOVING A SNAP RING. CONTACT YOUR IDC CUSTOMER SERVICE FOR MORE DETAILS.

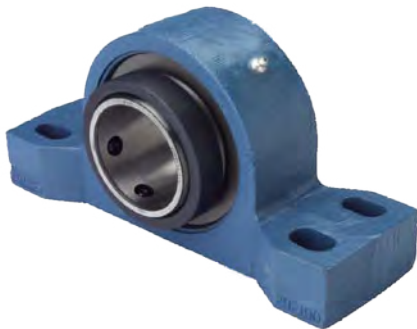
Mounted Spherical Roller Bearings and Take-up Units

INTERCHANGE

Type "E" Pillow Block

4 Bolt

IDC SELECT Type "E" SERIES



LINKBELT PEB
SKF SYE
REX ZEP
DODGE Type "E"
BROWNING PB 900F

Shaft Dia	IDC	REX	LINKBELT	DODGE	BROWNING	SKF
2-7/16	CEP2207F	ZEP2207F	PEB22439F	P4B-E-207R	PB920 2-7/16F	FSYE2-7/16
2-1/2	CEP2208F	ZEP2208F	PEB22440F	P4B-E-208R	PB920 3	FYE 2-1/2
2-15/16	CEP2215F	ZEP2215F	PEB22447F	P4B-E-215R	PB920 2-15/16F	FSYE2-15/16
3	CEP2300F	ZEP2300F	PEB22448F	P4B-E-300R	PB920 3F	FSYE 3
3-7/16	CEP2307F	ZEP23075F	PEB22455F	P4B-E-307R	PB 920 3-7/16F	FSYE3-7/16
3-1/2	CEP2308F	ZEP2308F	PEB22456F	P4B-E-308R	PB 920 3-1/2F	FSYE 3-1/2
3-15/16	CEP2315F	ZEP2315F	PEB22463F	P4B-E-315R	PB920 3-15/16F	FSYE3-15/16
4	CEP2400F	ZEP2400F	PEB22464F	P4B-E-400R	PB920 4F	FSYE 4
4-7/16	CEP2407F	ZEP5407F	PEB22471F	P4B-E-407R	PB920 4-7/16F	
4-1/2	CEP2408F	ZEP5408F	PEB22472F	P4B-E-408R	PB920 4-1/2F	
4-15/16	CEP2415F	ZEP5415F	PEB22479F	P4B-E-415R	PB920 4-15/16F	
5		ZEP5500F	PEB22480F	P4B-E-500R		

NOTE: Contact IDC Customer Service for any styles or part numbers not listed above. IDC Select Bearings are available in both expansion and non expansion housing styles and are supplied with (3) different seal arrangements, special lubrications, and many other application specific requirements.

IDC SELECT 2000 SERIES BEARINGS SHIP STANDARD AS NON-EXPANSION. HOWEVER, ALL IDC SELECT BEARINGS ARE AVAILABLE AS EXPANSION BY ADDING "EXP" AS THE SUFFIX TO THE PART NUMBER. BEARINGS CAN ALSO BE EASILY CONVERTED IN THE FIELD BY REMOVING A SNAP RING. CONTACT YOUR IDC CUSTOMER SERVICE FOR MORE DETAILS.

Mounted Spherical Roller Bearings and Take-up Units

INTERCHANGE 2000 Pillow Blocks



IDC SELECT "CN" SERIES

LINKBELT DSB
SKF TRH
REX ZN
DODGE TPHU
BROWNING 1000

Shaft Dia	IDC	REX	LINKBELT	DODGE	BROWNING	SKF
1-7/16	CN2107	ZN2107	DSB22423	*		TRH1-7/16
1-1/2	CN2108	ZN2108	DSB22424	TPHU-S2-107R	T900D	TRH 1-1/2
1-11/16		ZN2111	DSB2427	Note: This Block Does Not Interchange with industry standards.	Note: This Block Does Not Interchange with industry standards.	TYH1-11/16
1-3/4		ZN2112	DSB22428			TRH 1-3/4
1-15/16	CN2115	ZN2115	DSB22431	The complete frame and block is interchangea- ble, but the block alone is not.	The complete frame and block is interchangea- ble, but the block alone is not.	TRH1-15/16
2	CN2200	ZN2200	DSB22432			TRH 2
2-3/16	CN2203	ZN2203	DSB22435			TRH2-3/16
2-7/16	CN2207	ZN2207	DSB22439			TRH2-7/16
2-1/2	CN2208	ZN2208	DSB22440			TRH 2-1/2
2-15/16	CN2215	ZN2215	DSB22447			TRH2-15/16
3	CN2300	ZN2300	DSB22448			TRH 3
3-7/16	CN2307	ZN2307	DSB22455			TRH3-7/16
3-1/2	CN2308	ZN2308	DSB22456			TRH 3-1/2
3-15/16	CN2315	ZN2315	PB22463	TPHU-S2-200R	T900D	TRH3-15/16
4	CN2400	ZN2400	PB22464	*		TRH 4

NOTE: Contact IDC Customer Service for any styles or part numbers not listed above. IDC Select Bearings are available in both expansion and non expansion housing styles and are supplied with (3) different seal arrangements, special lubrications, and many other application specific requirements.

IDC SELECT 2000 SERIES BEARINGS SHIP STANDARD AS NON-EXPANSION. HOWEVER, ALL IDC SELECT BEARINGS ARE AVAILABLE AS EXPANSION BY ADDING "EXP" AS THE SUFFIX TO THE PART NUMBER. BEARINGS CAN ALSO BE EASILY CONVERTED IN THE FIELD BY REMOVING A SNAP RING. CONTACT YOUR IDC CUSTOMER SERVICE FOR MORE DETAILS.

Mounted Spherical Roller Bearings and Take-up Units

INTERCHANGE



2000 Pillow Blocks

IDC SELECT "CT" SERIES



LINKBELT TB
 SKF TBR
 REX ZT
 DODGE WIDE SLOT
 BROWNING STU1000

Shaft Dia	IDC	REX	LINKBELT	DODGE	BROWNING	SKF
1-7/16	CT2107	ZT2107	TB22423	WSTU-S2-107R		TBR1-7/16
1-1/2	CT2108	ZT2108	TB22424	WSTU-S2-108R		TBR 1-1/2
1-11/16		ZT2111	TB22427	WSTU-S2-111R		TBR1-11/16
1-3/4		ZT2112	TB22428	WSTU-S2-112R		TBR 1-3/4
1-15/16	CT2115	ZT2115	TB22431	WSTU-S2-115R	STU 1-15/16	TBR1-15/16
2	CT2200	ZT2200	TB22432	WSTU-S2-200R	STU 2	TBR 2
2-3/16	CT2203	ZT2203	TB22435	WSTU-S2-203R	STU 2-3/16	TBR2-3/16
2-7/16	CT2207	ZT2207	TB22439	WSTU-S2-215R	STU 2-7/16	TBR2-7/16
2-1/2	CT2208	ZT2208	TB22440	WSTU-S2-300R	STU 3	TBR 2-1/2
2-15/16	CT2215	ZT2215	TB22447	WSTU-S2-215R	STU 2-15/16	TBR2-15/16
3	CT2300	ZT2300	TB22448	WSTU-S2-300R	STU 3	TBR 3
3-7/16	CT2307	ZT2307	TB22455	WSTU-S2-307R	STU 3-7/16	TBR3-7/16
3-1/2	CT2308	ZT2308	TB22456	WSTU-S2-308R	STU 3-1/2	TBR 3-1/2
3-15/16	CT2315	ZT2315	TB22463	WSTU-S2-315R	STU 3-15/16	TBR3-15/16
4	CT2400	ZT2400	TB22464	WSTU-S2-400R	STU 4	TBR 4
4-7/16	CT2407	ZT5407				
4-1/2	CT2408	ZT5408				
4-15/16	CT2415	ZT5415				
5		ZT5500				

NOTE: Contact IDC Customer Service for any styles or part numbers not listed above. IDC Select Bearings are available in both expansion and non expansion housing styles and are supplied with (3) different seal arrangements, special lubrications, and many other application specific requirements.

IDC SELECT 2000 SERIES BEARINGS SHIP STANDARD AS NON-EXPANSION. HOWEVER, ALL IDC SELECT BEARINGS ARE AVAILABLE AS EXPANSION BY ADDING "EXP" AS THE SUFFIX TO THE PART NUMBER. BEARINGS CAN ALSO BE EASILY CONVERTED IN THE FIELD BY REMOVING A SNAP RING. CONTACT YOUR IDC CUSTOMER SERVICE FOR MORE DETAILS.

Mounted Spherical Roller Bearings and Take-up Units

INTERCHANGE

2000 Pillow Blocks



IDC SELECT "CHT" FRAMES



LINKBELT DSB
SKF TBR
REX ZHT
DODGE CP
BROWNING T1000

Shaft Dia	IDC	REX	LINKBELT	DODGE	BROWNING	SKF
1-15/16 2	CHT6- CHT6-	ZHT6- ZHT6-	DSB22431 DSB22432	CP400	-T1000D -T1000D	TBR1-15/16 TBR 2
2-3/16	CHT7-	ZHT7-	DSB22435	CP408	-T1000EL	TBR2-3/16
2-7/16 2-1/2	CHT8- CHT8-	ZHT8- ZHT8-	DSB22439 DSB2440	CP502	-T1000F -T1000F	TBR2-7/16 TBR 2-1/2
2-15/16 3	CHT9- CHT9-	ZHT9- ZHT9-	DSB22447 DSB22448	CP515	-T1000GL -T1000GL	TBR2-15/16 TBR 3
3-7/16 3-1/2	CHT10- CHT10-	ZHT10- ZHT10-	DSB22455 DSB22456	CP613	-T1000JL -T1000JL	TBR3-7/16 TBR 3-1/2
3-15/16 4	CHT11- CHT-11	ZHT11- ZHT-11	DSB22463 DSB22464	CP810	-T1000K -T1000K	TBR3-15/16 TBR 4
4-7/16 4-1/2	CHT12- CHT12-	ZHT12- ZHT11-	DSB22471 DSB22472			
4-15/16 5	CHT13- CHT13-	ZHT11- ZHT11-	DSB22479 DSB22480			

FRAMES ARE MANUFACTURED IN LENGTHS OF 12", 18", 24", 30", 36" AS STANARD

NOTE: Contact IDC Customer Service for any styles or part numbers not listed above. IDC Select Bearings are available in both expansion and non expansion housing styles and are supplied with (3) different seal arrangements, special lubrications, and many other application specific requirements.

IDC SELECT 2000 SERIES BEARINGS SHIP STANDARD AS NON-EXPANSION. HOWEVER, ALL IDC SELECT BEARINGS ARE AVAILABLE AS EXPANSION BY ADDING "EXP" AS THE SUFFIX TO THE PART NUMBER. BEARINGS CAN ALSO BE EASILY CONVERTED IN THE FIELD BY REMOVING A SNAP RING. CONTACT YOUR IDC CUSTOMER SERVICE FOR MORE DETAILS.

Mounted Spherical Roller Bearings and Take-up Units

INTERCHANGE 2000 Pillow Blocks IDC SELECT "CNT" FRAMES



LINKBELT TB
SKF TRH
REX ZNT
DODGE TPHU
BROWNING 1000



Shaft Dia	IDC	REX	LINKBELT	DODGE	BROWNING	SKF
1-15/16 2	CNT6- CNT6-	ZNT6- ZNT6-	TB22431 TB22432	<p>Note: This Frame Does Not Interchange with industry standards.</p> <p>The complete frame and block is interchangeable, but the frame alone is not.</p>	<p>.Note: This Frame Does Not Interchange with industry standards.</p> <p>The complete frame and block is interchangeable, but the frame alone is not.</p>	TRH1-15/16 TRH 2
2-3/16	CNT7-	ZNT7-	TB22435			TRH2-3/16
2-7/16 2-1/2	CNT8- CNT8-	ZNT8- ZNT8-	TB22439 TB22440			TRH2-7/16 TRH 2-1/2
2-15/16 3	CNT9- CNT9-	ZNT9- ZNT9-	TB22447 TB22448			TRH2-15/16 TRH 3
3-7/16 3-1/2	CNT10- CNT10-	ZNT10- ZNT10-	TB22455 TB22456			TRH3-7/16 TRH 3-1/2
3-15/16 4	CNT11- CNT11-	ZNT11- ZNT11-	TB22463 TB22464			TRH3-15/16 TRH 4

FRAMES ARE MANUFACTURED IN LENGTHS OF 12", 18", 24", 30", 36" AS STANDARD

NOTE: Contact IDC Customer Service for any styles or part numbers not listed above. IDC Select Bearings are available in both expansion and non expansion housing styles and are supplied with (3) different seal arrangements, special lubrications, and many other application specific requirements.

IDC SELECT 2000 SERIES BEARINGS SHIP STANDARD AS NON-EXPANSION. HOWEVER, ALL IDC SELECT BEARINGS ARE AVAILABLE AS EXPANSION BY ADDING "EXP" AS THE SUFFIX TO THE PART NUMBER. BEARINGS CAN ALSO BE EASILY CONVERTED IN THE FIELD BY REMOVING A SNAP RING. CONTACT YOUR IDC CUSTOMER SERVICE FOR MORE DETAILS.